

L-010-A

LAMP TYPE: 120V/230V MR16, GX10 bi-pin base, ANSI type M130 or M156
Maximum 39 Watts metal halide
SUITABLE FOR WET LOCATIONS, INDOOR OR OUTDOOR USE

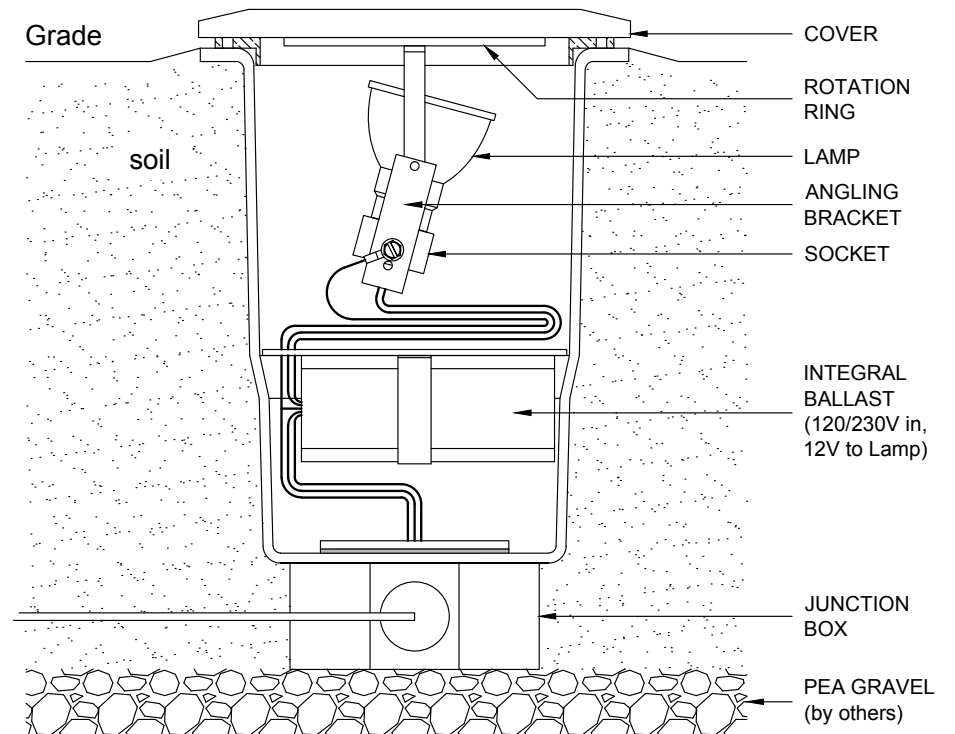
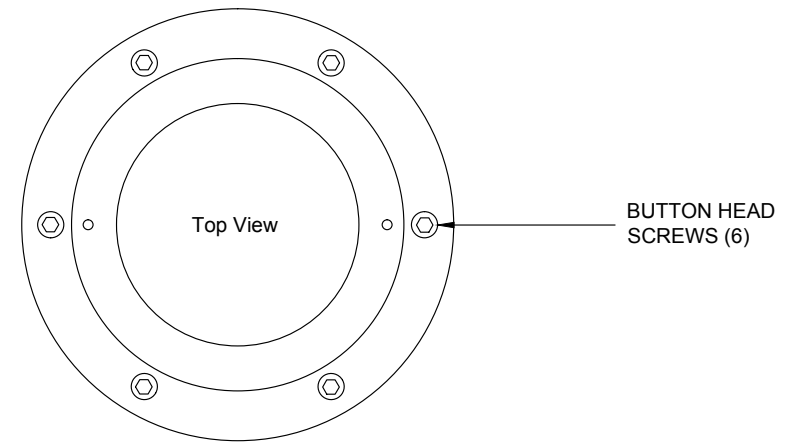
WARNING — Risk of Electric Shock. Verify that power is OFF before installing this fixture. This fixture must be installed in accordance with the National Electric Code and/or local codes. Failure to do so may result in serious personal injury or death. Wiring must be done by a licensed electrician.

INSTALLATION

1. Dig a minimum 12" diameter x 13" deep hole at desired location, and a narrow trench for the fixture cord to join main wiring.
2. Fill the hole with pea gravel 3-4" deep.
3. Place fixture in hole, positioning it as desired. For concrete installation, make hole depth such that the top of the factory-installed concrete ring (CR) is no lower than where the top of the finished concrete will be.
4. Using the supplied silicone-filled wire nuts, join the main wires to the fixture leads—black to black, white to white—as shown in the diagram. Make sure the green fixture wire is joined to the ground wire(s). Use silicone or electrical tape around wire nuts to ensure proper connection.
5. Back fill hole with dirt, sloping it away from fixture's top cover. For concrete installation, fill hole first with enough dirt to cover the wires, then fill the rest of the hole with concrete. Do not exceed the height of the concrete ring. Slope concrete away from fixture's top cover.

SETTING LAMP ANGLE & RELAMPING

1. Unscrew the six button-head screws in the Cover with a 1/8" hex wrench. Remove Cover. For relamping only, skip to Step 6.
2. Loosen (do not remove) the two Phillips-head screws inside the fixture to free the brass Rotation Ring.
3. Rotate the assembly to align the end-holes in the Rotation Ring with the screw heads. Pull rotation assembly out of the fixture.
4. Using a 3/32" hex wrench, loosen the two pivot screws on the sides of the Angling Bracket. Tilt the Bracket to the desired angle then tighten the pivot screws securely.
5. Replace the Rotation Ring over the Phillips screws and rotate to the desired orientation. Secure the Ring in place by tightening the Phillips screws. Ensure that all wiring is completely below the Rotation Ring and not caught between the Ring and the fixture's composite housing.
6. Holding the lamp at its base, twist lamp counter-clockwise almost 1/4 turn. Pull up to remove from socket.
7. Holding the new lamp at its base, align the lamp pins with the holes in the socket, insert the new lamp into the socket, and turn clockwise about 1/4 turn until it stops.
8. Replace Cover and six screws.



CSA Listed, file # 190030



808-405-6732

www.BeachsideLighting.com

