

# E17

**LAMP TYPE: MR16 GU5.3 bi-pin base—Maximum 15 Watts LED, 20 Watts halogen  
LED module—Maximum 4 Watts (suitable for indoor use)**

**WARNING** — Risk of Electric Shock. Install all luminaires 10 feet (3.05 m) or more from a pool, spa, or fountain. Verify that power is OFF before installing this fixture. This fixture must be installed in accordance with the National Electric Code and/or local codes. Failure to do so may result in serious personal injury or death. Wiring must be done by a licensed electrician.

For luminaires equipped with halogen lamps:

**INSTRUCTIONS PERTAINING TO A RISK OF FIRE OR INJURY TO PERSONS  
IMPORTANT SAFETY INSTRUCTIONS SAVE THESE INSTRUCTIONS**

Lighted lamp is HOT!

**WARNING** – To reduce the risk of FIRE OR INJURY TO PERSONS:

- Turn off/unplug and allow to cool before replacing lamp.
- Lamp gets HOT quickly! Contact only switch/plug when turning on.
- Do not touch hot lens or faceplate.
- Keep lamp away from materials that may burn.
- Do not touch the lamp at any time. Use a soft cloth. Oil from skin may damage lamp.
- Do not operate the luminaire fitting with a missing or damaged faceplate or lens.

This is a low-voltage fixture for use with maximum 25A, 15V power units only. A remote transformer is required. Do not overload the transformer by installing or relamping with higher wattage lamps that together exceed the capacity of the transformer. The low-voltage cable shall: a) be protected by routing in close proximity to the luminaire or fitting, or next to a building structure such as a house or deck; b) not be buried except for a maximum 6 inches (15.2 cm) in order to connect to the main low-voltage cable; and c) have the length cut off so that it is connected to a connector within 6 inches (15.2 cm) from a building structure, a luminaire, or fitting. Contact Beachside Lighting for low voltage cable and direct burial wire for use as main secondary wiring.

- FOR USE WITH LANDSCAPE LIGHTING POWER SUPPLY ONLY
- THIS DEVICE IS ACCEPTED AS A COMPONENT OF A LANDSCAPE LIGHTING SYSTEM WHERE THE SUITABILITY OF THE COMBINATION SHALL BE DETERMINED BY THE LOCAL INSPECTION AUTHORITIES HAVING JURISDICTION
- DO NOT CONNECT TWO OR MORE POWER SUPPLIES IN PARALLEL
- Unless equipped with LED module, LANDSCAPE LIGHTING SYSTEMS ARE FOR OUTDOOR USE ONLY
- NOT FOR USE IN DWELLING UNITS
- A luminaire shall not use tungsten halogen lamps unless the luminaire is marked for such lamps

## INSTALLATION IN SOIL

1. Dig an 8" diameter x 12" deep (20 x 30cm) hole at desired fixture location. Fill bottom half of hole with pea gravel (by others) for drainage (Figure 2).
2. Verify that the power is off.
3. Use a 5/64 hex wrench to remove the screw(s) in the domed Faceplate. Grasp the Faceplate and pull the fixture assembly out from the copper Housing.
4. This fixture can be wired through the side of the Housing or from the bottom. Remove resin plugs from holes that will be used for wiring and insert them into the unused holes.
5. Attach 1/2" PVC conduit fitting(s) (by others). **When installing the Housing, be sure to position it so the holes in the Concrete Ring align with where the holes in the Faceplate will be when it is facing the desired position. Note that each mounting hole in the Faceplate is in the center of the light window.** Refer to Figure 3 for Faceplate/Concrete Ring alignment. Place Housing assembly into hole and join to conduit(s).
6. Refill hole with soil. Make sure the fixture sits slightly above grade and the soil slopes away from the fixture (Figure 2).

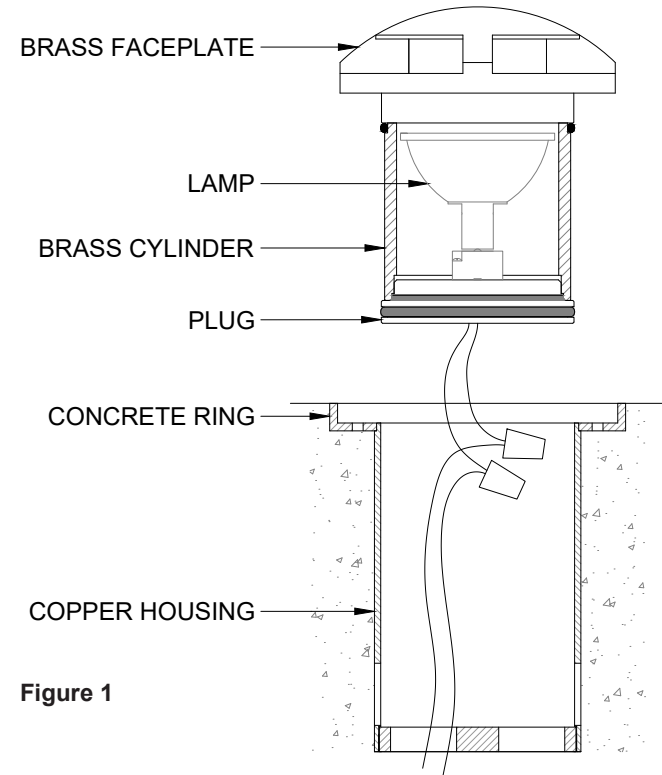


Figure 1

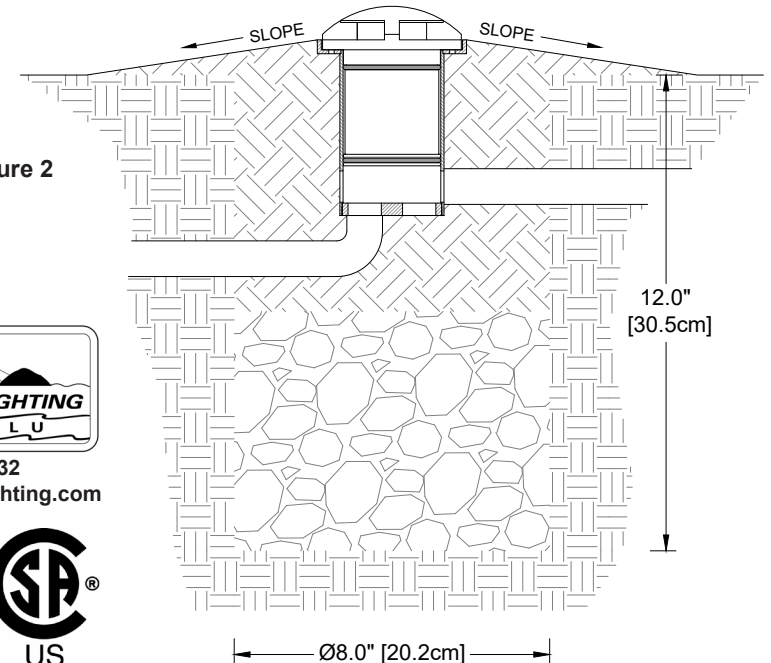


Figure 2



808-405-6732

www.BeachsideLighting.com

CSA Listed  
File # 190030



Ø8.0" [20.2cm]

## INSTALLATION IN CONCRETE

1. Follow steps 2 - 5 above.
2. Pour concrete around Housing, being sure to keep concrete from falling into Housing. **The top edge of the brass Concrete Ring must be flush with the finished surface (Figure 4).**

## WIRING / FINAL MOUNTING

1. Use silicone-filled wire nuts to ensure proper connection between fixture leads and wires from power source.
2. Use 5/64" hex wrench to attach Faceplate to Housing.

## LAMPING — MR16

1. Use 5/64" hex wrench to remove screw(s) in domed Faceplate. Note position of Faceplate for reassembly. Pull fixture straight up out of Housing. This is a compression seal using o-rings; twisting and pulling together is ideal.
2. The Faceplate is permanently attached to the Cylinder containing the lamp. Do not attempt to unscrew the Cylinder from the Faceplate.
3. Hold the Plug fitting (where the wires enter at the rear of the fixture) and unscrew the Cylinder/Faceplate assembly off the Plug, exposing the lamp.
4. Grasp the lamp at its base and pull straight up to remove from socket.
5. Holding the new lamp at its base, align the lamp pins with the holes in the socket and insert by pushing straight down.
6. Screw Faceplate/Cylinder assembly back onto Plug.
7. Put silicone grease on o-rings in Cylinder and Plug and reinsert into Housing, aligning the Faceplate with its original position.
8. Secure the Faceplate by reinstalling the screws removed in Step 1.

## LAMPING — LED MODULE

This fixture has a long-life LED Module that should not need replacement for years. However, if a Module fails or technology improves and a new one is desired, replacements are available from Beachside Lighting (808-263-5717). Once received:

1. Use 5/64" hex wrench to remove screw(s) in domed Faceplate. Note position of Faceplate for reassembly. Pull fixture straight up out of Housing. This is a compression seal using o-rings; twisting and pulling together is ideal.
2. Disconnect fixture leads from the supply wires coming from the transformer. Use a sharp instrument to pull out red silicone plug used as wire guide from inside the brass Plug fitting at the rear of the Cylinder. It must be slid out of the Plug and off the wires to allow them to turn freely.
3. Hold the Plug and unscrew the Cylinder/Faceplate assembly off the Plug, exposing the LED Module. The Faceplate is permanently attached to the Cylinder containing the lamp. Do not attempt to unscrew the Cylinder from the Faceplate.
4. Unscrew the LED Module and remove it from the Plug.
5. Feed the lead wires from the new Module through the Plug and screw the module fully down onto the Plug. After the Module is fully engaged, push the wires through the red silicone guide and reinsert it into the Plug.
6. Use silicone-filled wire nuts to join fixture wires to the power source wires.
7. Screw Faceplate/Cylinder assembly back onto Plug.
8. Put silicone grease on o-rings in Cylinder and Plug and reinsert into Housing, aligning the Faceplate with its original position.
9. Secure the Faceplate by reinstalling the screws removed in Step 1.

## CHANGING OPTICS

1. Follow Steps 1 - 3 in "Lamping — MR16" above.
2. Unscrew the round cap that surrounds the optic.
3. **SINGLE LED:** After removing the cap, carefully remove the optic and replace with a new one.  
**TRIPLE LED:** Carefully lift edge of optic to remove. Replace with a new optic by aligning the three support posts of the optic with the three holes in the face of the LED board. This is aided by the three tabs on the outer edge of the optic mating with the three recesses on the rim of the module.
4. Carefully screw the cap back on. Make sure it is fully threaded down onto the module.

## FACEPLATE MOUNTING HOLE ORIENTATION TOP VIEWS

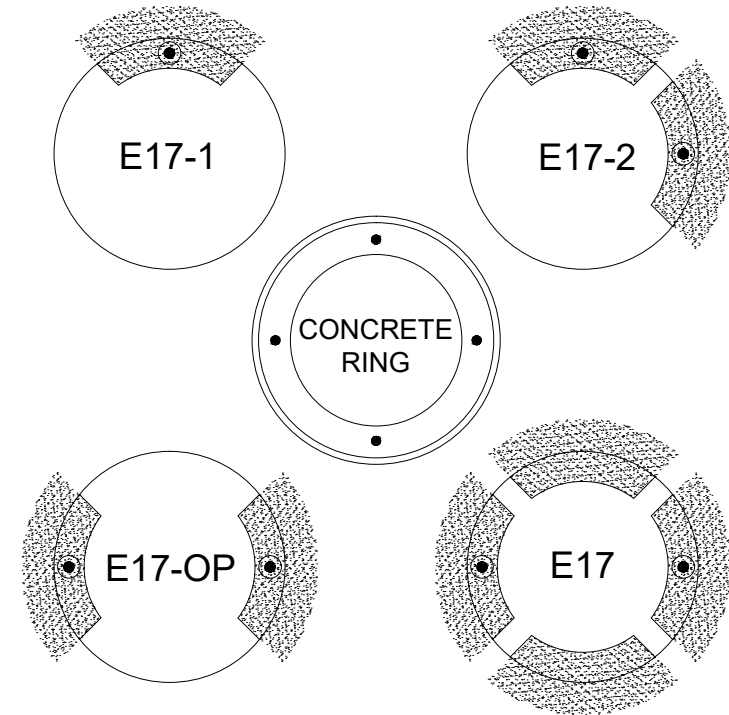


Figure 3

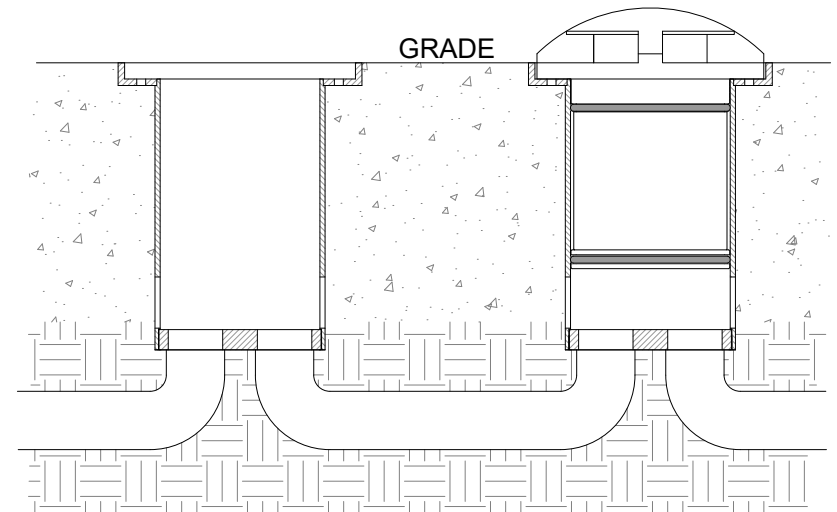


Figure 4