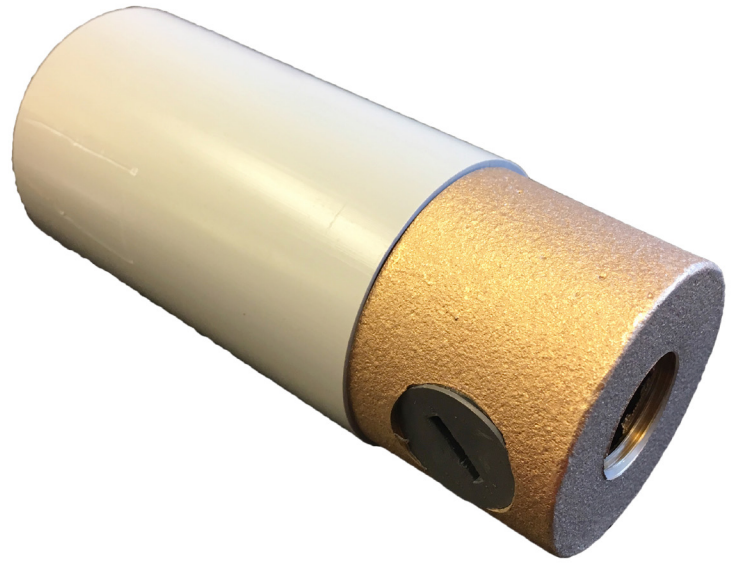


CF

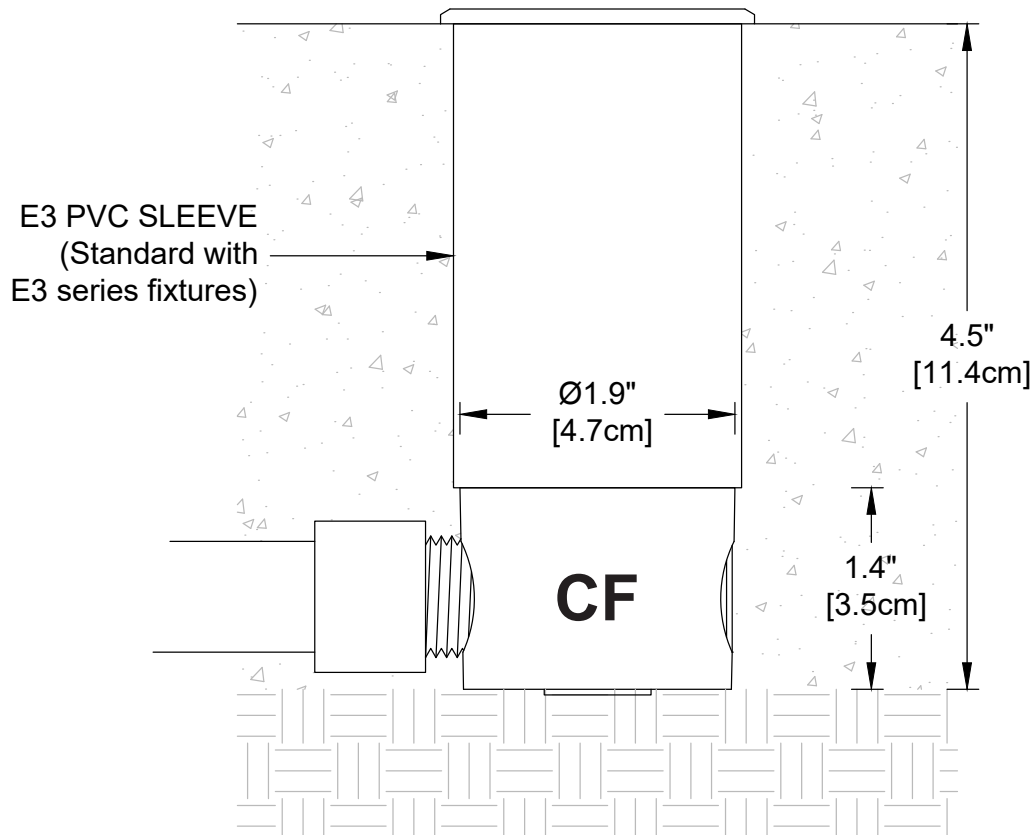
(For Limited Depth or Remote Splice)

The Conduit Fitting (CF) accessory is a brass wiring compartment that screws into the back of the PVC Sleeve of all E3-series fixtures. It is used for installations with limited depth (shallow slabs, thin walls) or when a remote splice with wire protection is desired. The CF is used in place of the Concrete Form Kit (CFK) for minimum fixture length while providing three female-threaded attachment points for 1/2" PVC conduit and fittings.

Due to limited volume, use only 16g or 18g supply wire with minimal jacketing and butt splice fixture wires to a remote connection.



Brass CF shown here threaded into PVC sleeve.
Sleeve is standard with all E3 series fixtures.



Project

By

Date

CF

Accessory