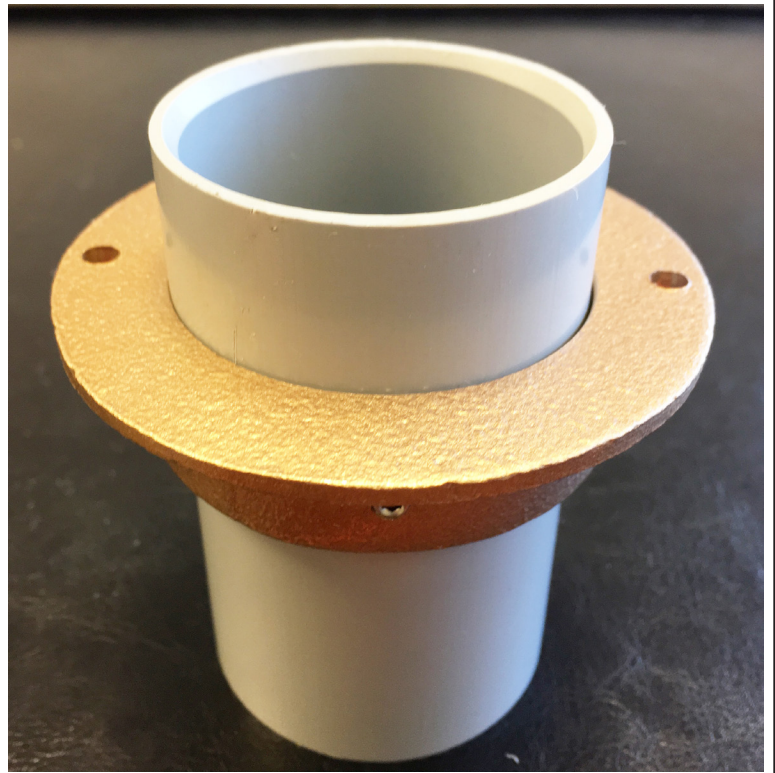


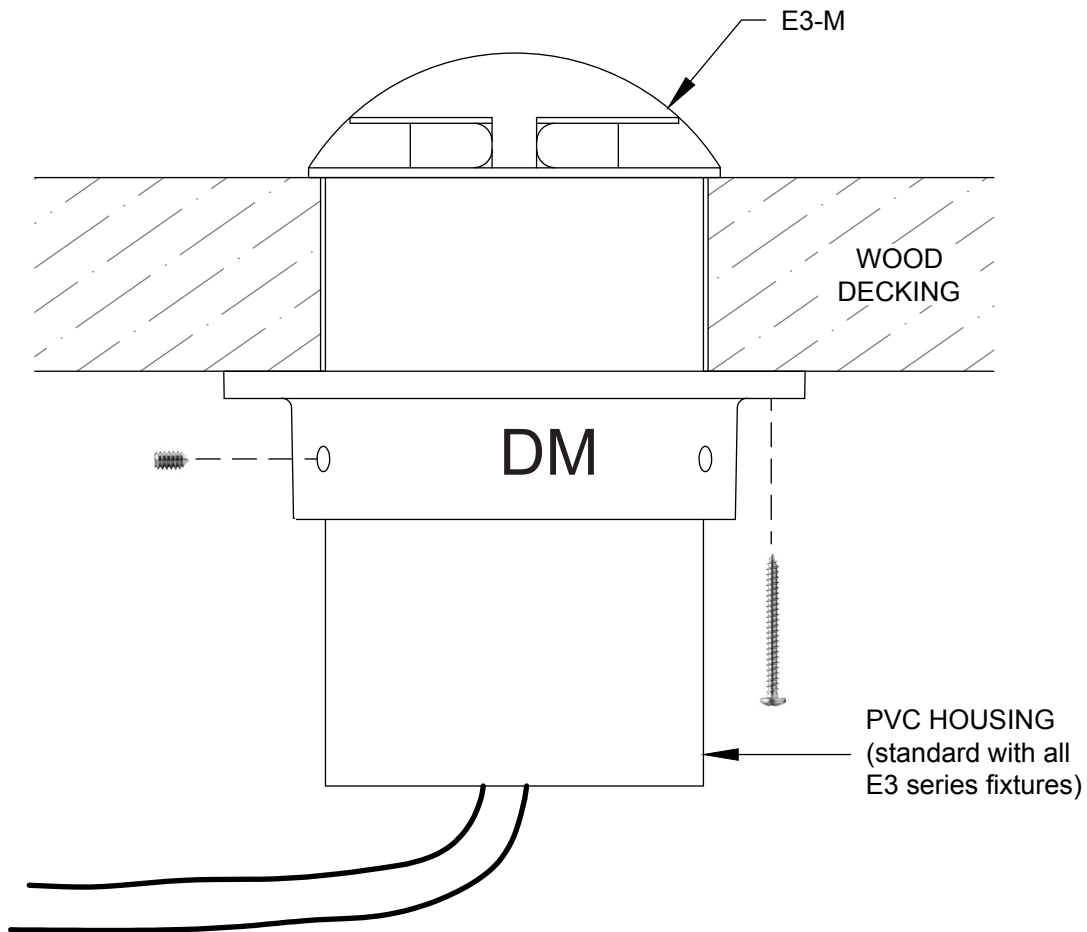
DM

The Deck Mount (DM) accessory is a brass mounting flange used to secure the E3-series fixtures. It is used permanently in non-masonry applications where the rear of the fixture housing is exposed behind a wall or under a deck. It is also included in Beachside's Concrete Form Kit (CFK) for temporary positioning of E3 fixtures in form work before pouring and encasing the fixture in masonry.

- Includes:
- DM
 - (2) #8 x 3/4" Stainless Steel Sheet Metal Screws
 - (3) #8 x 3/16" Stainless Steel Set Screws



DM is brass flange only. Attached PVC sleeve is standard with all E3 series fixtures.



MADE IN USA

Project _____

By _____

Date _____

DM
Accessory