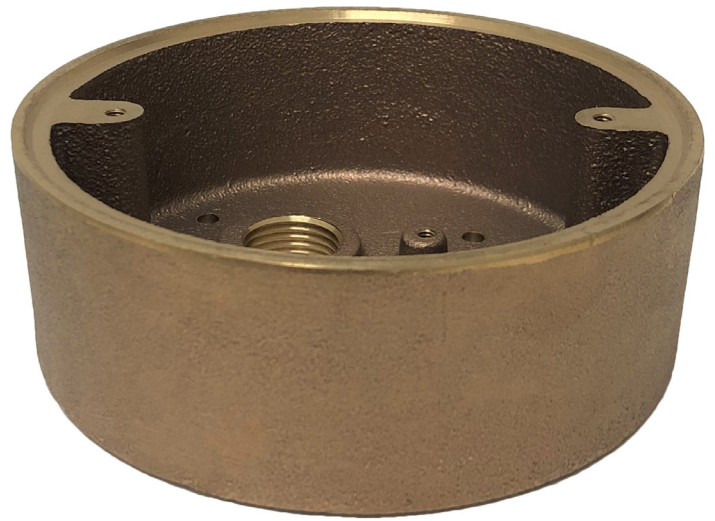
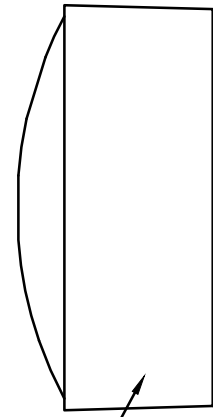
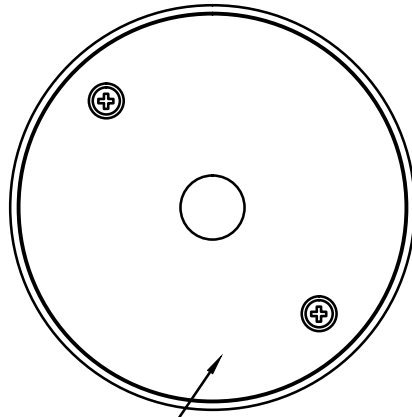
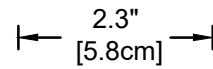
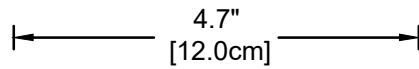


SMB

The SMB is a cast brass, surface-mount box that requires the use of a CM, CM1, CM2, or CM3 canopy. Allows room for splicing and/or electronic transformers. Two 1/2" NPSM conduit openings and four 3/16" holes in the back for mounting.

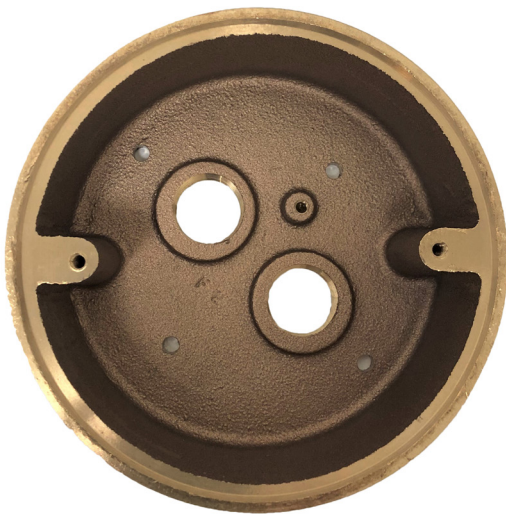


- **CM1** Sand cast brass canopy mount with one 1/2" NPSM. Substitution accessory on Beachside's L-011-CM1.
- **CM2** Sand cast brass canopy mount with two 1/2" NPSM. Substitution accessory on Beachside's L-011-CM2.
- **CM3** Sand cast brass canopy mount with three 1/2" NPSM. Substitution accessory on Beachside's L-011-CM2 with motion sensor.
- **CM** Sand cast brass canopy mount with one slip hole. Substitution accessory on Beachside's L-013 and L-014 fixtures.



CM1 Canopy Mount

SMB



Project _____	By _____	Date _____
For ordering purposes, please specify (example: SB-CM1)		
SB Ballast	—	Canopy Mount