

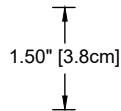
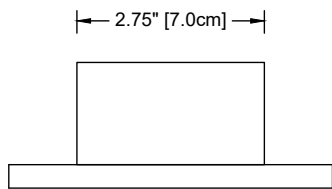
STL

The STL is an energy efficient, compact LED steplight suitable for interior or exterior applications. Its 1-to-2.5-Watt output provides maintenance-free illumination in excess of 50,000 hours, while its compact size and integral driver make for simple wiring and easy installation into standard 2" x 4" junction boxes with #6-32 threads at 3.28" on center. Suitable for wet locations. The STL faceplate features 0.070" (1.8mm) thick louvers positioned at a 30° angle with cutoff, preventing glare.

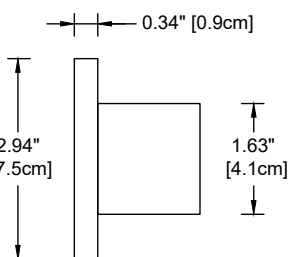
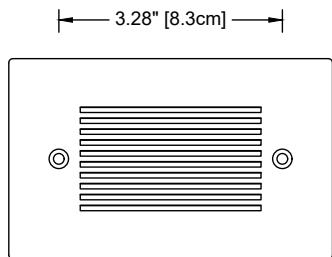


- Construction** High-impact, weather-resistant polycarbonate LED module. Solid brass faceplate.
- Electrical**
- WW** 120 Volts, 2.5 Watts, dimmable
 - A** 100-277 Volts, 1 Watt, non-dimmable
 - MV** 100-277 Volts, 1.5 Watts, non-dimmable
- Lamps** Module consists of 12 LEDs with integral driver circuit
- __ WW** Warm White (3000K)
 - __ A** Amber (1659K) **TURTLE FRIENDLY**
 - __ MV** Warm White (3000K)
- Accessory** **__ SGBOX-SS** Single-gang stainless steel junction box
- Finish** Unfinished is standard, no specification required.
- __ FIN-BK** Black Acid Finish
 - __ FIN-DB** Dark Bronze Acid Finish
 - __ FIN-NK** Satin Nickel Plating
 - __ FIN-WH** White Powder Coating

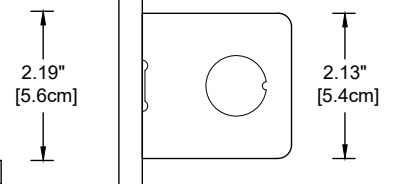
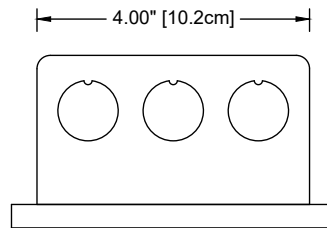
The fixture will weather to a natural patina. The patina process is natural with brass and copper. Rate of patina and eventual color is dependent upon climate and proximity to the ocean. Thus, Beachside does not guarantee any specific appearance.



LED module + Faceplate



Mounted on SGBOX-SS accessory



IP65
CSA Listed, file #190030
5 year fixture warranty

Project	By	Date
For ordering purposes, please specify (example: STL—MV—SGBOX-SS—FIN-NK)		
STL Fixture	— Lamp	— Accessory
		— Finish (if any)