

E17

LAMP TYPE: MR16 LED, GU5.3 bi-pin base – Maximum 7.5 Watts
LED module – Maximum 7.5 Watts

SUITABLE FOR: *INDOOR USE • WET LOCATIONS • COMBUSTIBLE SURFACES
IN-GROUND • CEILING MOUNTING • RECESSED IN WALL*

CAUTION — RISK OF FIRE. Verify that power is OFF before installing this fixture.

USE ONLY CLASS 2 POWER SUPPLY OR TRANSFORMER.
DO NOT INSTALL INSULATION WITHIN 3 in. / 76 mm OF ANY PART OF THE LUMINAIRE.
FOR REPLACEABLE LIGHT BULB MODELS, MAKE SURE TO NOT EXCEED THE RATED WATTAGE.
WHEN INSTALLING IN A CEILING, CEILING MUST BE COVERED.



WARNING — RISK OF ELECTRIC SHOCK. This product must be installed in accordance with the applicable installation code by a person familiar with the construction and operation of the product and the hazards involved. Failure to do so may result in serious personal injury or death.

This is a low-voltage fixture for use with maximum 25A, 15V power units only. A remote transformer is required. Do not overload the transformer by installing or relamping with higher wattage lamps that together exceed the capacity of the transformer.



CSA Listed
File # 190030
www.BeachsideLighting.com
808-405-6732



INSTALLATION IN SOIL

1. Dig an 8" diameter x 12" deep (20 x 30cm) hole at desired fixture location. Fill bottom half of hole with pea gravel (by others) for drainage (Figure 2).
2. Verify that the power is off.
3. Use a 5/64 hex wrench to remove the screw(s) in the domed Faceplate. Grasp the Faceplate and pull the fixture assembly out from the copper Housing.
4. This fixture can be wired through the side of the Housing or from the bottom. Remove resin plugs from holes that will be used for wiring and insert them into the unused holes.
5. Attach ½" PVC conduit fitting(s) (by others). **When installing the Housing, be sure to position it so the holes in the Concrete Ring align with where the holes in the Faceplate will be when it is facing the desired position. Note that each mounting hole in the Faceplate is in the center of the light window.** Refer to Figure 3 for Faceplate/Concrete Ring alignment. Place Housing assembly into hole and join to conduit(s).
6. Refill hole with soil. Make sure the fixture sits slightly above grade and the soil slopes away from the fixture (Figure 2).

INSTALLATION IN CONCRETE

1. Follow steps 2 - 5 above.
2. Press included foam debris guard into the Concrete Ring and pour concrete around Housing. **The top edge of the brass Concrete Ring must be flush with the finished surface (Figure 4).**

WIRING / FINAL MOUNTING

1. Use silicone-filled wire nuts to ensure proper connection between fixture leads and wires from power source.
2. Use 5/64" hex wrench to attach Faceplate to Housing.

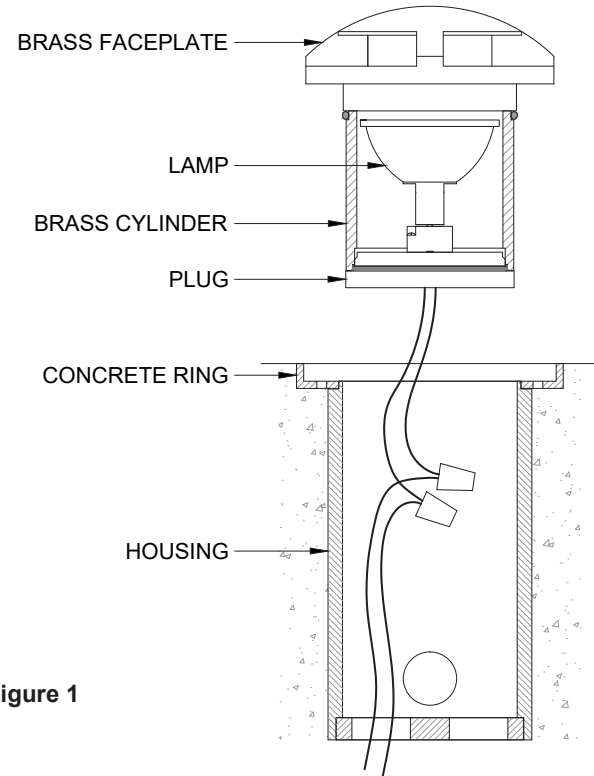


Figure 1

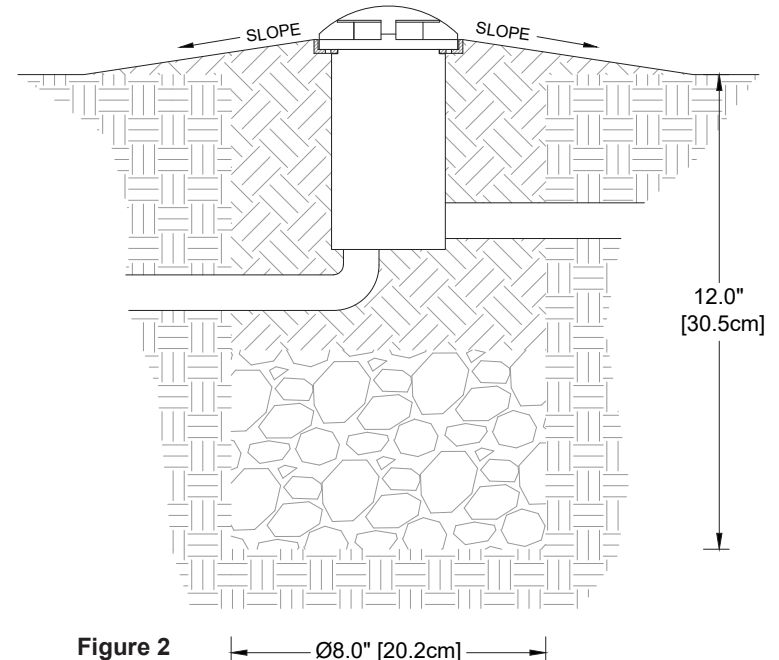


Figure 2

LAMPING — MR16

1. Use 5/64" hex wrench to remove screw(s) in domed Faceplate. Note position of Faceplate for reassembly. Pull fixture straight up out of Housing. This is a compression seal using o-rings; twisting and pulling together is ideal.
2. The Faceplate is permanently attached to the Cylinder containing the lamp. Do not attempt to unscrew the Cylinder from the Faceplate.
3. Hold the Plug fitting (where the wires enter at the rear of the fixture) and unscrew the Cylinder/Faceplate assembly off the Plug, exposing the lamp.
4. Grasp the lamp at its base and pull straight up to remove from socket.
5. Holding the new lamp at its base, align the lamp pins with the holes in the socket and insert by pushing straight down.
6. Screw Faceplate/Cylinder assembly back onto Plug.
7. Put silicone grease on o-ring in Cylinder and reinsert into Housing, aligning the Faceplate with its original position.
8. Secure the Faceplate by reinstalling the screws removed in Step 1.

LAMPING — LED MODULE

This fixture has a long-life LED Module that should not need replacement for years. However, if a Module fails or technology improves and a new one is desired, replacements are available from Beachside Lighting (808-263-5717). Once received:

1. Use 5/64" hex wrench to remove screw(s) in domed Faceplate. Note position of Faceplate for reassembly. Pull fixture straight up out of Housing. This is a compression seal using o-rings; twisting and pulling together is ideal.
2. Disconnect fixture leads from the supply wires coming from the transformer. Use a sharp instrument to pull out red silicone plug used as wire guide from inside the brass Plug fitting at the rear of the Cylinder. It must be slid out of the Plug and off the wires to allow them to turn freely.
3. Hold the Plug and unscrew the Cylinder/Faceplate assembly off the Plug, exposing the LED Module. The Faceplate is permanently attached to the Cylinder containing the lamp. Do not attempt to unscrew the Cylinder from the Faceplate.
4. Unscrew the LED Module and remove it from the Plug.
5. Feed the lead wires from the new Module through the Plug and screw the module fully down onto the Plug. After the Module is fully engaged, push the wires through the red silicone guide and reinsert it into the Plug.
6. Use silicone-filled wire nuts to join fixture wires to the power source wires.
7. Screw Faceplate/Cylinder assembly back onto Plug.
8. Put silicone grease on o-rings in Cylinder and Plug and reinsert into Housing, aligning the Faceplate with its original position.
9. Secure the Faceplate by reinstalling the screws removed in Step 1.

CHANGING OPTICS

1. Follow Steps 1 - 3 in "Lamping — MR16" above.
2. Unscrew the round cap that surrounds the optic.
3. **SINGLE LED:** After removing the cap, carefully remove the optic and replace with a new one.
TRIPLE LED: Carefully lift edge of optic to remove. Replace with a new optic by aligning the three support posts of the optic with the three holes in the face of the LED board. This is aided by the three tabs on the outer edge of the optic mating with the three recesses on the rim of the module.
4. Carefully screw the cap back on. Make sure it is fully threaded down onto the module.

FACEPLATE MOUNTING HOLE ORIENTATION TOP VIEWS

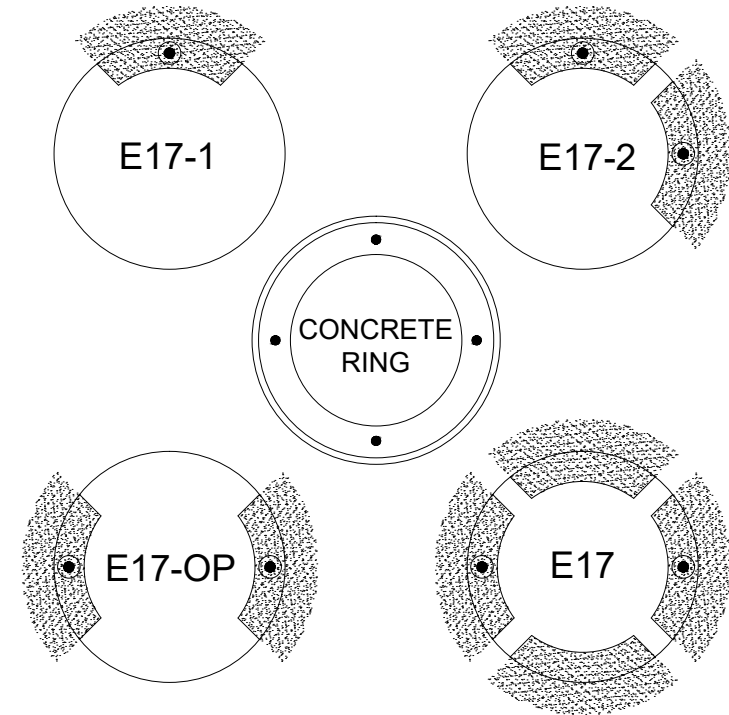


Figure 3

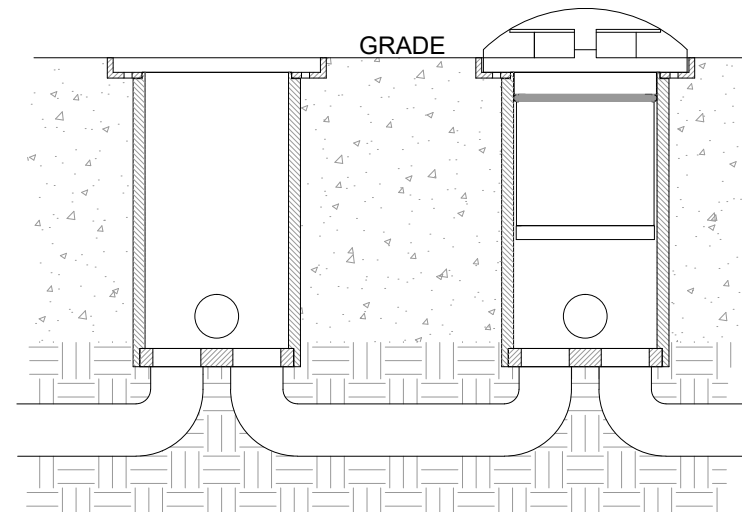


Figure 4