

# E9 SERIES

Includes E9-R, E9-RL, E9-RC, E9-RCL, E9-SQ, and E9-SQL

**LAMP TYPE:** LED module, maximum 7.5 Watts  
GU5.3 MR16 self-ballasted LED, maximum 15 Watts

**SUITABLE FOR:** *INDOOR (LED Module only) and OUTDOOR USE • IN-GROUND  
COMBUSTIBLE SURFACES • CEILING MOUNTING • RECESSED IN WALL*

*Fixture may be installed less than 5 ft (1.5 m) from the inside walls of a pool, spa, or fountain when supplied by listed transformers or power supplies that comply with NEC 680.23(A)(2).*



**WARNING — RISK OF ELECTRIC SHOCK.** This product must be installed in accordance with the applicable installation code by a person familiar with the construction and operation of the product and the hazards involved. Failure to do so may result in serious personal injury or death.

This is a low-voltage fixture for use with maximum 25A, 15V power units only. A remote transformer is required. Do not overload the transformer by installing or relamping with higher wattage lamps that together exceed the capacity of the transformer. Protect the fixture wiring by routing in close proximity to the luminaire or fitting, or next to a structure like a house or deck. Do not bury except for a maximum 6 inches (15.2 cm) to connect to the main low-voltage cable. Trim fixture wires so connection is made within 6 inches (15.2 cm) from a building structure, luminaire, or fitting. Contact Beachside Lighting below to order main low voltage cable and accessories.

- FOR USE WITH LANDSCAPE LIGHTING POWER SUPPLY ONLY
- THIS DEVICE IS ACCEPTED AS A COMPONENT OF A LANDSCAPE LIGHTING SYSTEM WHERE THE SUITABILITY OF THE COMBINATION SHALL BE DETERMINED BY THE LOCAL INSPECTION AUTHORITIES HAVING JURISDICTION
- DO NOT CONNECT TWO OR MORE POWER SUPPLIES IN PARALLEL
- LANDSCAPE LIGHTING SYSTEMS ARE FOR OUTDOOR USE ONLY (applies to MR16 only)
- NOT FOR USE IN DWELLING UNITS
- A LUMINAIRE SHALL NOT USE TUNGSTEN HALOGEN LAMPS UNLESS THE LUMINAIRE IS MARKED FOR SUCH LAMPS
- USE ONLY CLASS 2 POWER SUPPLY OR TRANSFORMER
- DO NOT INSTALL INSULATION WITHIN 3 in / 76 mm OF ANY PART OF THE LUMINAIRE
- DO NOT EXCEED THE RATED WATTAGE
- WHEN INSTALLING IN A CEILING, CEILING MUST BE COVERED



[www.BeachsideLighting.com](http://www.BeachsideLighting.com)  
808-405-6732



CSA Listed  
File # 190030

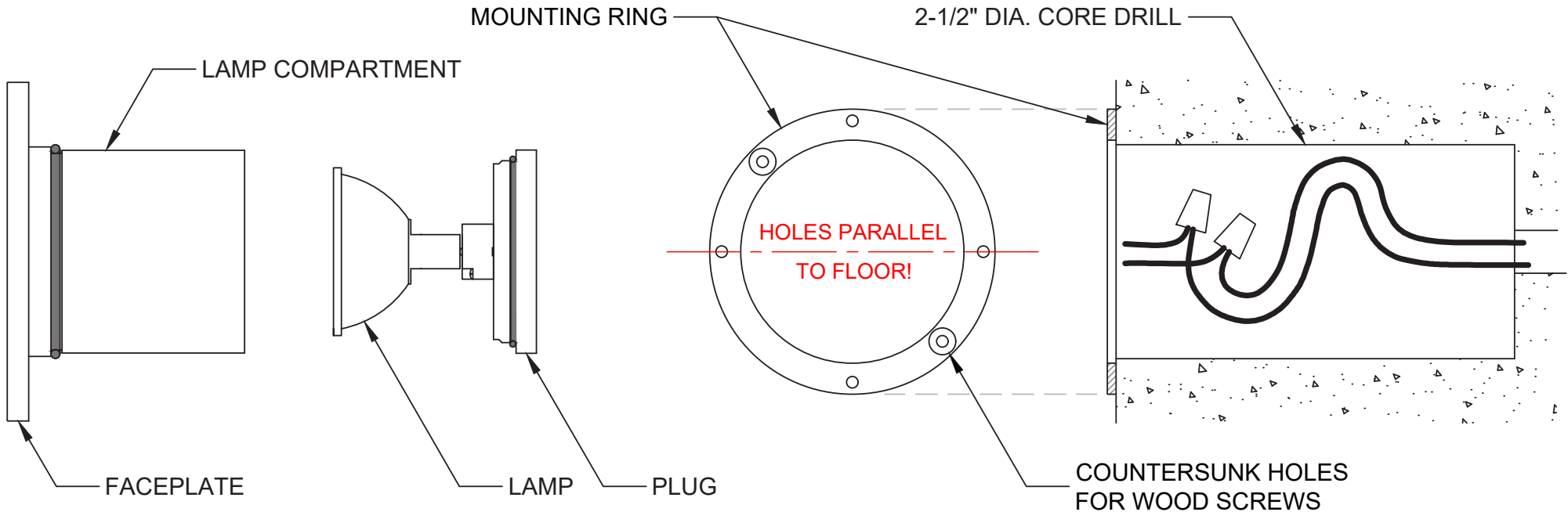
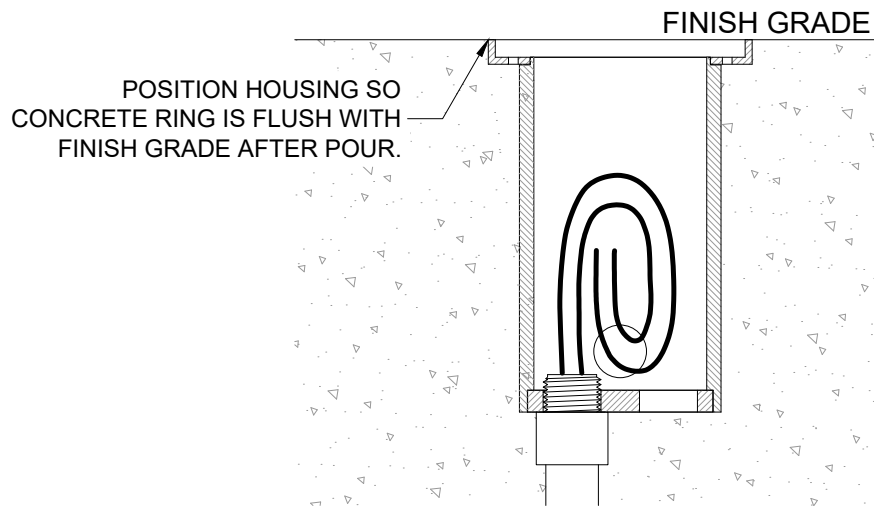


Figure 1 (E9-SQ shown)

**SURFACE TRIM INSTALLATION - horizontal or vertical, no concrete ring  
(Figure 1)**

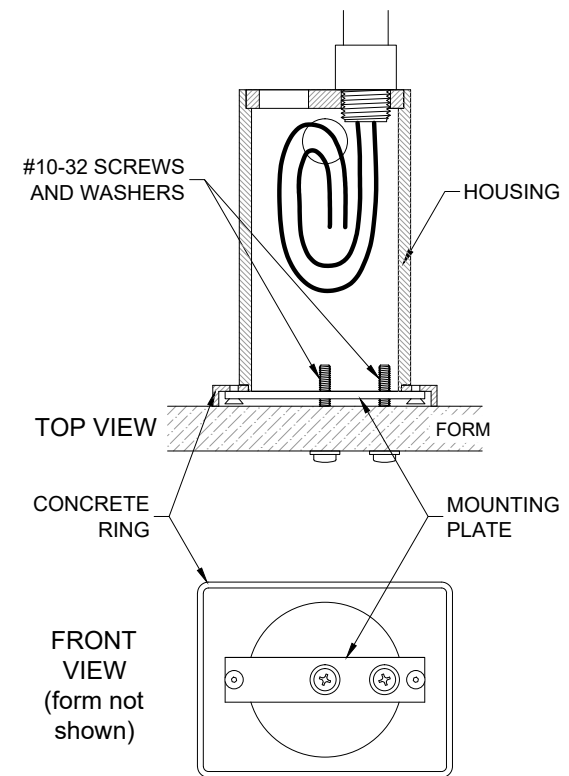
1. Use a 2-1/2" core drill to create a void in existing masonry or wood, followed by holes in the back or side of the void for wiring as needed.
2. Center the Mounting Ring over the hole. **Mounting Ring must be flat against the FINISHED SURFACE. THREADED holes in Mounting Ring must be parallel to floor or vertical surface being uplit.** With the threaded holes level, trace the countersunk holes in the Ring onto wall/ceiling. Do not trace the THREADED holes.
3. For installation in wood, use supplied wood screws in countersunk holes to fasten Ring. Drill pilot holes as necessary depending on wood hardness. For concrete, drill 3/16" holes at least 3/4" deep, insert supplied anchors, align Ring, and fasten with supplied sheet metal screws.
4. Run supply wires, leaving them long enough to stick out past the mounting surface.
5. Verify that the power to the fixture is off and use silicone-filled wire nuts (supplied) to join the fixture leads to the power supply wires. Use silicone or electrical tape around the wire nuts to ensure proper connection.
6. Push the connections into the hole, followed by the Faceplate/Lamp Compartment assembly, and fasten the brass Faceplate to the Mounting Ring using a 5/16" hex wrench.



**Figure 2 (E9-R shown)**

**RECESSED TRIM INSTALLATION - vertical, with "CR" concrete ring  
(Figure 2)**

1. Establish fixture location and attach 1/2" PVC conduit fittings and conduit as necessary. Plug any unused hole.
2. Run supply wires, leaving them long enough to stick out past the Concrete Ring.
3. Position the copper Housing assembly so that **the end of the Concrete Ring will be flush with the FINISHED SURFACE. THREADED holes in Concrete Ring must be parallel to vertical surface being uplit.**
4. Press included foam debris guard into the Concrete Ring to keep the Housing free of debris.
5. Pour concrete and allow 24 hours to cure.
6. Remove foam. Verify that the power to the fixture is off and use silicone-filled wire nuts (supplied) to join the fixture leads to the power supply wires. Use silicone or electrical tape around the wire nuts to ensure proper connection.
7. Push the connections into the Housing, followed by the Lamp Compartment, and fasten the brass Faceplate to the Concrete Ring using a 5/16" hex wrench.



**Figure 3 (E9-RCL shown)**

**RECESSED TRIM INSTALLATION - horizontal, with "CR" concrete ring  
(Figure 3)**

The following instructions include the optional Mounting Plate, used to secure the Housing assembly to the back of a form for a poured concrete wall.

1. Establish and mark the center of the fixture on form. Center the Plate on that mark, level it, and mark the second hole 1" to the side of the center hole. Drill 7/32" holes through the form at the two marks.
2. Attach Mounting Plate inside Concrete Ring using the #6 x 1/4" screws.
3. Attach 1/2" PVC conduit fittings as necessary, install conduit, and run supply wires, leaving them long enough inside the Housing to stick out past the Concrete Ring. Plug any unused holes.
4. If there will be a finish applied to the concrete (e.g., stucco), remove material to create a recess in the back of the form to the depth of the surface finish for the Concrete Ring to fit into.
5. Insert #10 screws with washers through the form from the outside and thread them into the holes in the Plate, pulling it tight against the inside of the form. **The THREADED holes in Concrete Ring/ Mounting Plate must be parallel to floor.**
6. Pour concrete and allow at least 24 hours to cure. **Remove the #10 screws securing the Housing before removing form.**
7. Remove the Mounting Plate from the Concrete Ring.
8. Verify that the power to the fixture is off and use silicone-filled wire nuts (supplied) to join the fixture leads to the power supply wires. Use silicone or electrical tape around the wire nuts to ensure proper connection.
9. Push the connections into the Housing, followed by the Lamp Compartment, and fasten the brass Faceplate to the Concrete Ring with the #6 x 3/8" flat head screws using a 5/16" hex wrench.

## LAMPING - MR16

1. Make sure power to fixture is off.
2. Unscrew Faceplate fasteners and remove Faceplate/Lamp Compartment assembly. If this faceplate is recessed into the concrete ring ("CR" version—flush installation), insert short end of hex wrench into one of the holes in the faceplate like a hook to aid removal.
3. Unscrew brass Lamp Compartment cylinder from rear brass Plug, exposing the lamp. Do not separate the Faceplate from the cylinder. (See Figure 1)
4. Pull old lamp out of socket.
5. Align pins of new Lamp with holes in socket and push Lamp all the way into socket.
6. Apply silicone grease to o-ring behind threads and reinstall Lamp Compartment onto Plug.
7. Apply silicone grease to Plug o-ring (if present) and reinsert Faceplate/Lamp Compartment assembly.
8. Fasten Faceplate with screws removed in Step 2.

## LAMPING - LIGHT ENGINE

This fixture has a long-life LED Module that should not need replacement for years. However, if a Module fails or technology improves and a new one is desired, replacements are available from Beachside Lighting (808-263-5717). Once received:

1. Follow Steps 1 - 3 in "LAMPING - MR16" above.
2. Disconnect fixture leads from supply wires.
3. Use a sharp instrument to pull out red silicone plug used as a wire guide from inside the brass Plug. It must be removed from the Plug and off the wires to allow them to turn freely.
4. Unscrew the LED Module from the Plug.
5. Feed lead wires of the replacement Module through Plug and screw Module onto Plug.
6. Push wires through silicone guide and reinsert guide into the Plug.
7. Apply silicone grease to o-ring behind threads and reinstall Lamp Compartment onto Plug.
8. Use new silicone-filled wire nuts to reconnect fixture leads to supply wires.
9. Apply silicone grease to Plug o-ring (if present) and reinsert Faceplate/Lamp Compartment assembly.
10. Fasten Faceplate.

## CHANGING OPTICS (LIGHT ENGINE ONLY)

1. Follow Steps 1 - 3 in "LAMPING - MR16" to expose the LED Module.
2. Unscrew the round cap on the end of the Module that surrounds the optic.
3. SINGLE CHIP: Carefully remove old optic and replace with new one. Be sure that the small silicone gasket recessed in the channel at top of Module remains in place.  
TRIPLE CHIP: Lift the edge the optic and remove. Carefully install new optic by aligning the three support posts on the optic with the three holes in the face of the LED board. This will be aided by three tabs on the outer edge of the optic matching up with three recesses on the rim of the Module.
4. Screw the cap back onto the Module.
5. Follow Steps 6 - 8 in "LAMPING - MR16" to reassemble fixture.