

L-010

LAMP TYPE: LED Module, Maximum 12 Watts
GU5.3 MR16 self-ballasted LED, Maximum 15 Watts

Fixture may be installed less than 5 ft (1.5 m) from the inside walls of a pool, spa, or fountain when supplied by listed transformers or power supplies that comply with NEC 680.23(A)(2).



WARNING — RISK OF ELECTRIC SHOCK. This product must be installed in accordance with the applicable installation code by a person familiar with the construction and operation of the product and the hazards involved. Failure to do so may result in serious personal injury or death.

This is a low-voltage fixture for use with maximum 25A, 15V power units only. A remote transformer is required. Do not overload the transformer by installing or relamping with higher wattage lamps that together exceed the capacity of the transformer. Protect the fixture wiring by routing in close proximity to the luminaire or fitting, or next to a structure like a house or deck. Do not bury except for a maximum 6 inches (15.2 cm) to connect to the main low-voltage cable. Trim fixture wires so connection is made within 6 inches (15.2 cm) from a building structure, luminaire, or fitting. Contact Beachside Lighting below to order main low voltage cable and accessories.

- FOR USE WITH LANDSCAPE LIGHTING POWER SUPPLY ONLY
- THIS DEVICE IS ACCEPTED AS A COMPONENT OF A LANDSCAPE LIGHTING SYSTEM WHERE THE SUITABILITY OF THE COMBINATION SHALL BE DETERMINED BY THE LOCAL INSPECTION AUTHORITIES HAVING JURISDICTION
- DO NOT CONNECT TWO OR MORE POWER SUPPLIES IN PARALLEL
- LANDSCAPE LIGHTING SYSTEMS ARE FOR OUTDOOR USE ONLY
- NOT FOR USE IN DWELLING UNITS
- A LUMINAIRE SHALL NOT USE TUNGSTEN HALOGEN LAMPS UNLESS THE LUMINAIRE IS MARKED FOR SUCH LAMPS

INSTALLATION

1. Dig a minimum 12" diameter x 13" deep hole at desired location, and a narrow trench for the fixture cord to join wiring from transformer.
2. Cover the bottom of the hole with pea gravel 3-4" deep.
3. If the glare shield or protection grate is used, take into account the orientation of the accessory's mounting holes on the Cover when placing the fixture into the hole. Ensure the fixture is positioned as desired before back-filling the hole.
4. Verify that the power is off. Use the supplied silicone-filled wire nuts to join the main wires to the fixture leads.
5. Back fill hole with dirt, sloping it away from fixture's Cover. For concrete installation, fill hole first with enough dirt to cover the wires, then fill the rest of the hole with concrete. Do not exceed the height of the factory-installed Concrete Ring. Slope concrete away from fixture's Cover.



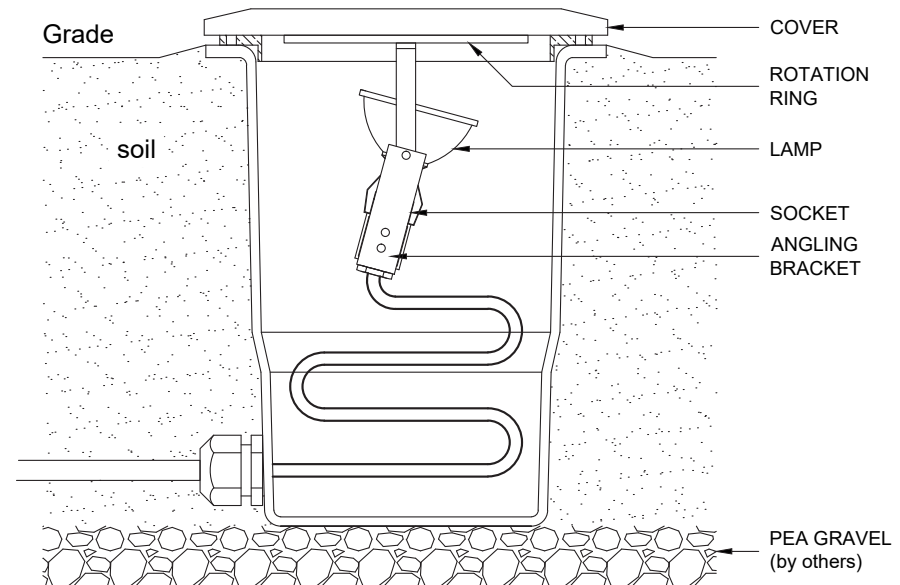
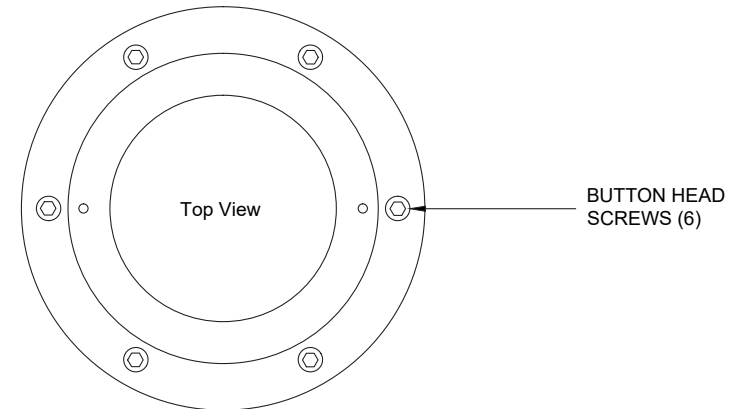
CSA Listed, file # 190030

www.BeachsideLighting.com
808-405-6732



SETTING LAMP ANGLE & LAMPING (MR16)

1. Unscrew the six button-head screws in the Cover with a 1/8" hex wrench. Remove Cover. For relamping, skip to Step 6.
2. Loosen (do not remove) the two Phillips-head screws inside the fixture to free the brass Rotation Ring.
3. Rotate the assembly to align the end-holes in the Rotation Ring with the screw heads. Pull rotation assembly out of the fixture.
4. Using a 3/32" hex wrench, loosen the two pivot screws on the sides of the Angling Bracket. Tilt the Bracket to the desired angle then tighten the pivot screws securely.
5. Replace the Rotation Ring over the Phillips screws and rotate to the desired orientation. Secure the Ring in place by tightening the Phillips screws. Ensure that all wiring is completely below the Rotation Ring and not caught between the Ring and the fixture's composite housing.
6. Holding the lamp at its base, pull straight up to remove from socket.
7. Holding the new lamp at its base, align the lamp pins with the holes in the socket and insert by pushing straight down.
8. Replace Cover and six screws.

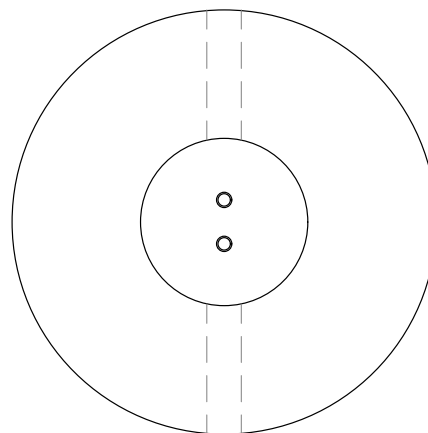


RELAMPING (LED Module)

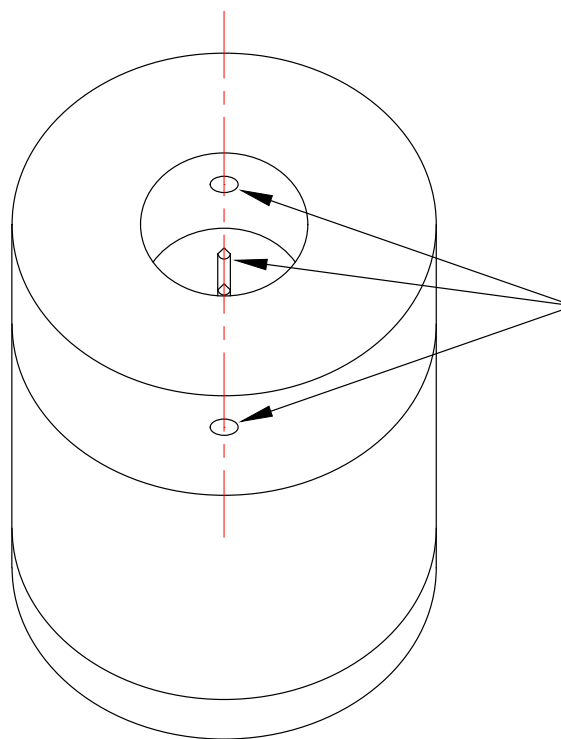
1. Turn power to fixture OFF.
2. Hold the Base and unscrew the brass Lamp Housing cylinder, exposing the Lamp. The Shade, glass lens, and Lamp Housing will unscrew as a single unit.
3. [If equipped with an LED Module instead of MR16 Lamp, proceed to Step 5.] Using a soft cloth, grasp the Lamp and pull straight up to remove from Socket.
4. Align the pins of the new lamp with the holes in the socket and push the lamp into the socket. Proceed to Step 7.
5. Pull straight up on the LED Module to remove from Socket.
6. The set screws holes in the base of the Module are aligned with the pins inside. Use them as a guide to align the pins with the terminals in the Socket. Properly installed Module will sit flat on the Base.
7. Screw the Lamp Housing/Shade assembly back onto the Base. Do not overtighten.

CHANGING OPTICS ON LED MODULE

1. Turn power off and follow Steps 1 - 2 in "RELAMPING" above.
2. Unscrew the small, round cap that surrounds the optic on the end of the Module.
3. Remove the old optic and carefully replace with new optic. Be sure that the small silicone gasket recessed in the channel at top of Module remains in place.
4. Screw the cap back onto the Module and screw the Lamp Housing/Shade assembly back onto the Base. Do not overtighten.



BOTTOM VIEW



**PINS ARE ALIGNED
WITH SET SCREWS**