

# L-012F

## LAMP TYPE: G4 bi-pin

For installation in **NON-combustible** wall/ceiling materials (masonry):  
**Maximum 35 Watts halogen / 20 Watts Xenon / 10 Watts LED**

For installation in **Combustible** wall/ceiling materials (wood):  
**Maximum 15 Watts Xenon / 10 Watts halogen and LED**

**WARNING** — Risk of Electric Shock. Install all luminaires 10 feet (3.05 m) or more from a pool, spa, or fountain. Verify that power is OFF before installing this fixture. This fixture must be installed in accordance with the National Electric Code and/or local codes. Failure to do so may result in serious personal injury or death. Wiring must be done by a licensed electrician.

For luminaires equipped with halogen lamps:

**INSTRUCTIONS PERTAINING TO A RISK OF FIRE OR INJURY TO PERSONS**  
**IMPORTANT SAFETY INSTRUCTIONS**      **SAVE THESE INSTRUCTIONS**  
Lighted lamp is HOT!

**WARNING** – To reduce the risk of FIRE OR INJURY TO PERSONS:

- Turn off/unplug and allow to cool before replacing lamp.
- Lamp gets HOT quickly! Contact only switch/plug when turning on.
- Do not touch hot lens or faceplate.
- Keep lamp away from materials that may burn.
- Do not touch the lamp at any time. Use a soft cloth. Oil from skin may damage lamp.
- Do not operate the luminaire fitting with a missing or damaged faceplate or lens.

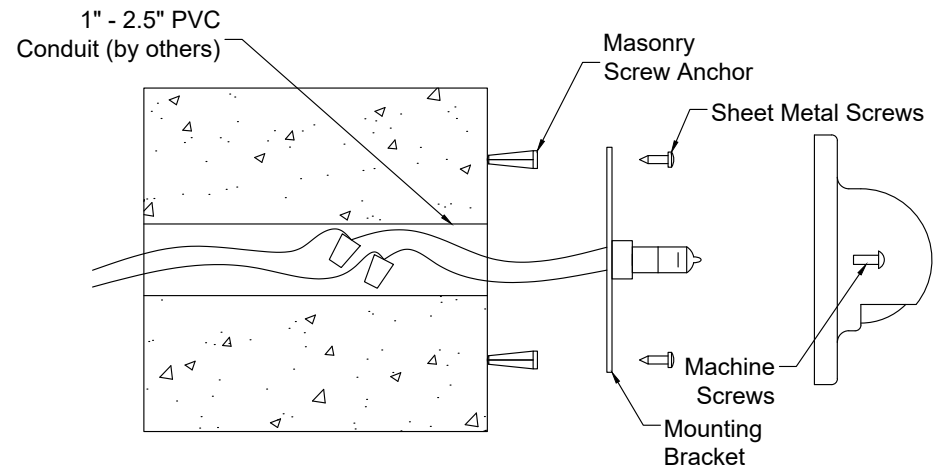
This is a low-voltage fixture for use with maximum 25A, 15V power units only. A remote transformer is required. Do not overload the transformer by installing or relamping with higher wattage lamps that together exceed the capacity of the transformer. The unit low-voltage cable shall: a) be protected by routing in close proximity to the luminaire or fitting, or next to a building structure such as a house or deck; b) not be buried except for a maximum 6 inches (15.2 cm) in order to connect to the main low-voltage cable; and c) have the length cut off so that it is connected to a connector within 6 inches (15.2 cm) from a building structure, a luminaire, or fitting. Contact Beachside Lighting for low voltage cable and direct burial wire for use as main secondary wiring. THIS DEVICE IS ACCEPTED AS A COMPONENT OF A LANDSCAPE LIGHTING SYSTEM WHERE THE SUITABILITY OF THE COMBINATION SHALL BE DETERMINED BY CSA OR LOCAL INSPECTION AUTHORITIES HAVING JURISDICTION.

## INSTALLATION

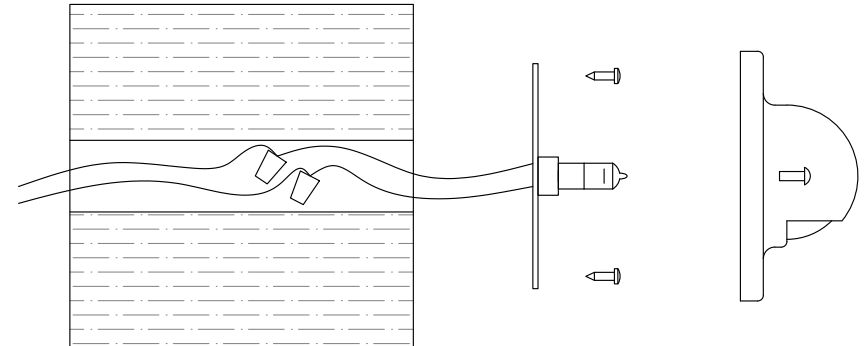
1. Use a 3/32" hex wrench to unscrew the two stainless steel machine screws holding the domed faceplate to the mounting bracket.
2. For mounting to an existing junction box, skip to Step 7. For new construction, center the mounting bracket so that the fixture wires can feed back into 1" - 2.5" PVC sleeve (by others) in wall. Once centered, make sure the two THREADED holes on the bracket are level, then trace the UNTHREADED slots in bracket onto wall/ceiling. Do not trace the THREADED holes in bracket.
3. Using a 3/16" bit, drill 1" deep holes centered on the slot tracings.
4. Use silicone-filled wire nuts (supplied) to join fixture and supply wires to ensure proper connection.
5. Insert screw anchors into holes and align slots on mounting bracket over anchors, making any adjustments needed to keep the threaded holes level.
6. Secure bracket to surface with sheet metal screws (supplied).
7. If mounting to an existing round junction box, use fixture's wire nuts to splice into line from transformer. Use machine screws to secure mounting bracket to junction box, keeping tapped holes in bracket level. Slots in bracket will align with holes in 4" junction boxes.
8. Reattach faceplate to bracket with the machine screws removed in Step 1.

## LAMPING

1. Use a 3/32" hex wrench to unscrew the two stainless steel machine screws holding the domed faceplate to the mounting bracket.
2. Using a soft cloth to hold the top portion of the lamp, carefully push the lamp pins fully into the socket.
3. Reattach faceplate onto bracket with screws removed in Step 1.

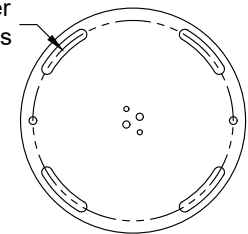


Non-Combustible (Masonry) Installation, 35W Max.



Combustible (Wood) Installation, 15W Max.

Mounting Bracket slots on 3.5" diameter  
fit 4" octagonal junction boxes



808-405-6732

[www.BeachsideLighting.com](http://www.BeachsideLighting.com)

CSA Listed, file # 190030