

# L-016 / L-016-F / L-016-SQ

LAMP TYPE: MR16 GU5.3 bi-pin base — Maximum 50 Watts halogen, 15 Watts LED

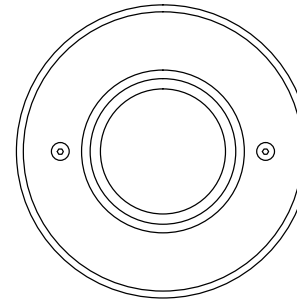
NON-IC • SUITABLE FOR WET LOCATIONS

WARNING — Risk of Electric Shock. Verify that power is OFF before installing this fixture. This fixture must be installed in accordance with the National Electric Code and/or local codes. Failure to do so may result in serious personal injury or death. Wiring must be done by a licensed electrician.

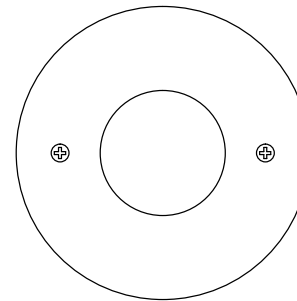
- INSULATION MUST BE INSTALLED AT LEAST 3 INCHES (76mm) FROM ANY PART OF THE LUMINAIRE.
- BLINKING LIGHT OF THIS THERMAL PROTECTED LUMINAIRE MAY INDICATE OVERHEATING.
- MIN. 90° SUPPLY CONDUCTORS.
- ACCESS ABOVE CEILING REQUIRED.
- IF DIMMER CONTROL IS DESIRED, USE ONLY DIMMERS RATED FOR LOW VOLTAGE MAGNETIC TRANSFORMERS.

## INSTALLATION

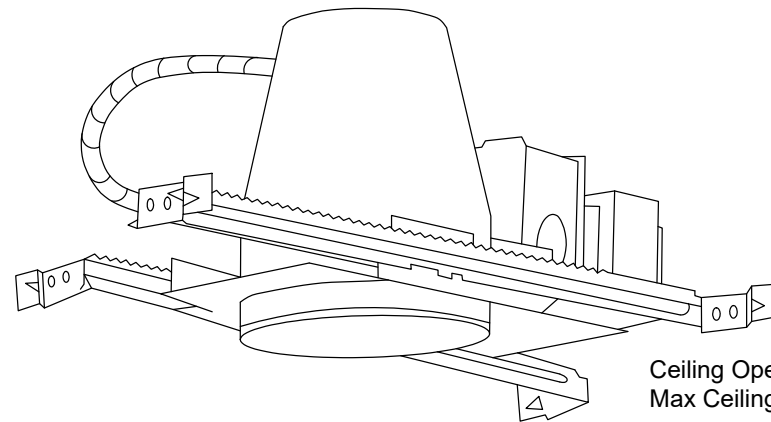
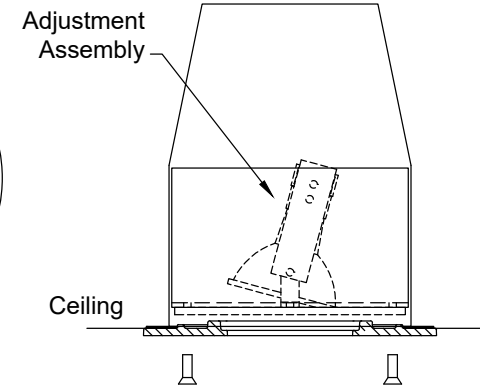
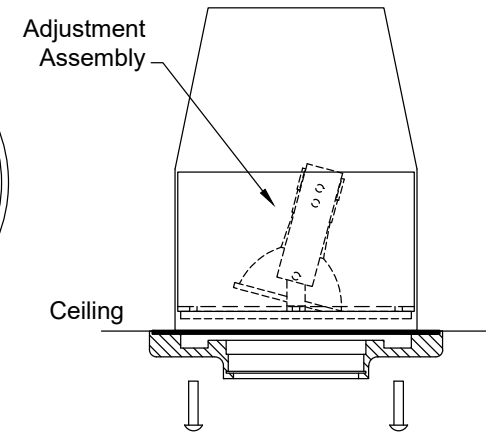
1. The 12 volt electrical connection between the transformer and the fixture housing is already established using permanent crimped wire nuts. This connection should not be altered.
2. Remove the transformer/junction box mounting plate assembly from the junction box.
3. Remove a knockout from the junction box for the supply wires before mounting the transformer plate back on the junction box.
4. When making the electrical connections, connect the 3/8" or 1/2" size flexible conduit (Black, White, & Green 120V supply wires) to the junction box with a suitable connector.
5. Connect the black supply wire (hot) to the black wire in the junction box with yellow wire nut provided. Connect the white supply wire (neutral) to the white wire in the junction box with yellow wire nut provided. Connect the green ground with the bare copper wire or green grounding wire with orange wire nut provided.
6. Replace the junction box cover by setting the plate base into the holder and locking at the side with the spring clip.
7. To mount the recessed fixture to the ceiling structure, extend the adjustable bar hangers and firmly mount to the ceiling joist support members. Please note: When installing to a wood joist, the convenient mounting spikes may be used to hold the hanger bars temporarily in place. The installation must be completed with proper fasteners (not provided). Screw or nail the bar hangers securely to the wood joists. T-Bar cutouts are provided in the bar hangers.
8. Ensure that the rim of the white can is flush with the finished ceiling opening by loosening the (3) screws located in the wall of the can and slide the can vertically. To access these screws, remove the adjustment assembly by unscrewing the (2) screws on the circular rotation bracket. Once the desired position is reached, fully tighten the (3) screws to prevent more movement after installation is complete.
9. With the adjustment assembly removed, adjust the angle of the lamp by loosening the (2) screws on the U-shaped bracket and tilt the bracket to the desired angle. Retighten (2) screws. Before replacing, rotate the adjustment assembly to the desired position and replace (2) screws. These screws should be in slots opposite to each other. Adjust the position within the selected slots as desired and tighten screws. (For LED light engine, Go to step 11)
10. Firmly press lamp pins into the socket. NOTE: Handle the MR-16 lamp only by the socket or rim, never touch the interior portion. Tuck combined wire lead out of the way into housing cavity.
11. Attach fixture trim to the fixture by aligning the two holes on the trim with those on the circular rotation bracket and fasten using (2) 3/4" long screws. Do not over tighten. Tighten screws just enough to create a sufficient seal between gasket and white can.



L-016



L-016-F



Ceiling Opening: 4-3/8"  
Max Ceiling Thickness: 1"



Recessed Incandescent Luminaire Non-IC

[www.BeachsideLighting.com](http://www.BeachsideLighting.com)

808-405-6732



US 05/20