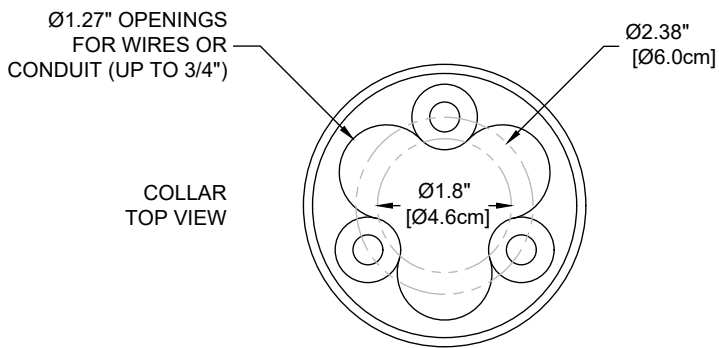
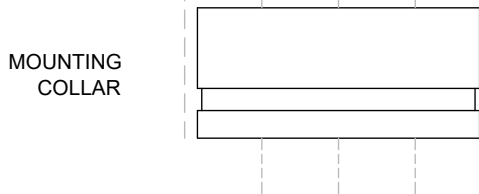
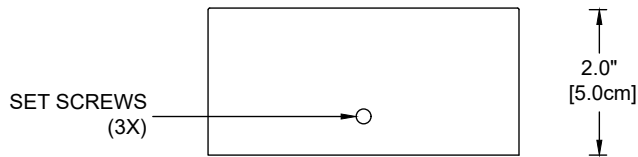
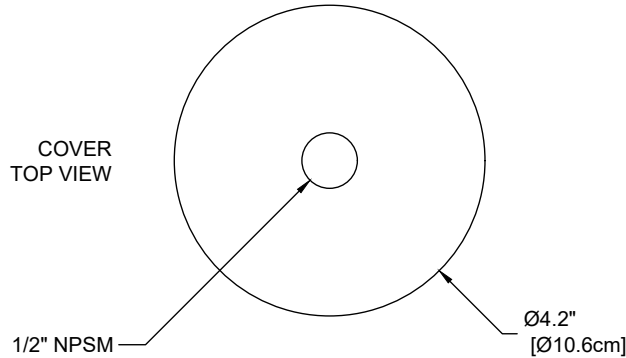


# BSB

The BSB is a two-piece, machined brass surface mount with three 3/8"x2.5" long stainless steel lag screws and shields for mounting. Cover has 0.18" thick wall and 0.22" thick top. Wire/conduit is fed from beneath. Internal volume allows for splicing. Not a sealed junction box—water-proof connections required.



**Weight:** 2.4 lbs / 0.6 kg (BSB)  
3.4 lbs / 1.5 kg (BSB+Collar)

Project

By

Date

**BSB**

Accessory