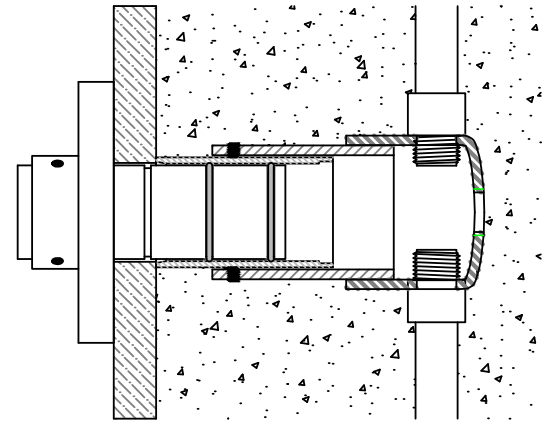
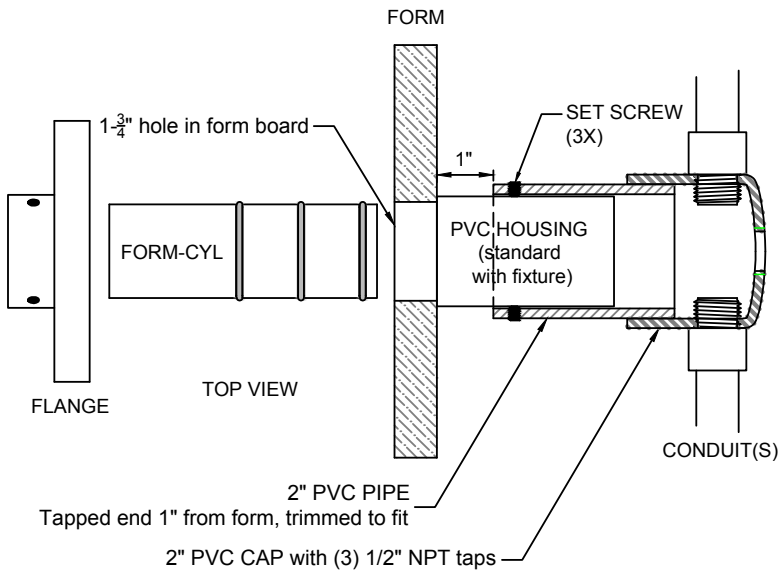
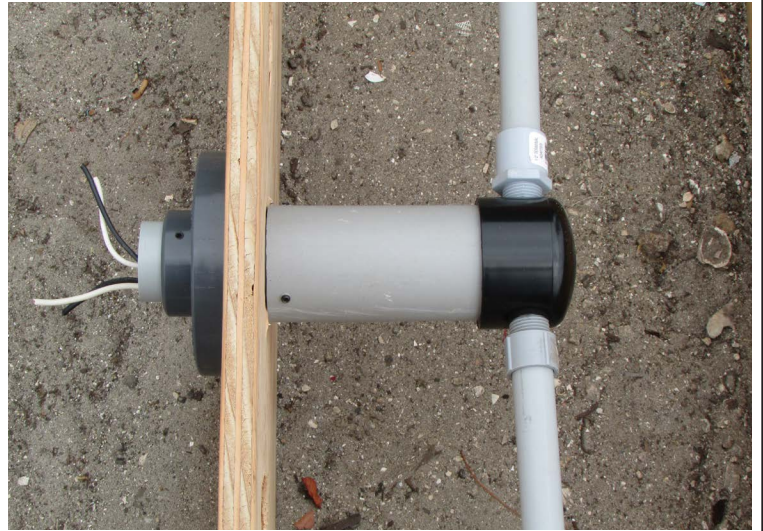


# CFK

The Concrete Form Kit (CFK) is used when installing E3-series fixtures into new masonry. It uses a PVC flange with a temporary positioning cylinder to secure the E3-series fixtures to form work until the concrete/masonry is poured and set.

- Includes:
- 2" Gray Sch. 40 PVC pipe, 5" long, with (3) #10-32 x 1/4" set screws
  - 2" Pipe Cap with (3) 1/2" NPT tapped holes
  - PVC Flange with (3) #10-32 x 3/16" Set Screws
  - (2) #10 x 1-1/2" Stainless Steel Sheet Metal Screws
  - FORM-CYL (PVC) with O-rings



**MADE IN USA**

Project \_\_\_\_\_

By \_\_\_\_\_

Date \_\_\_\_\_

**CFK**  
Accessory