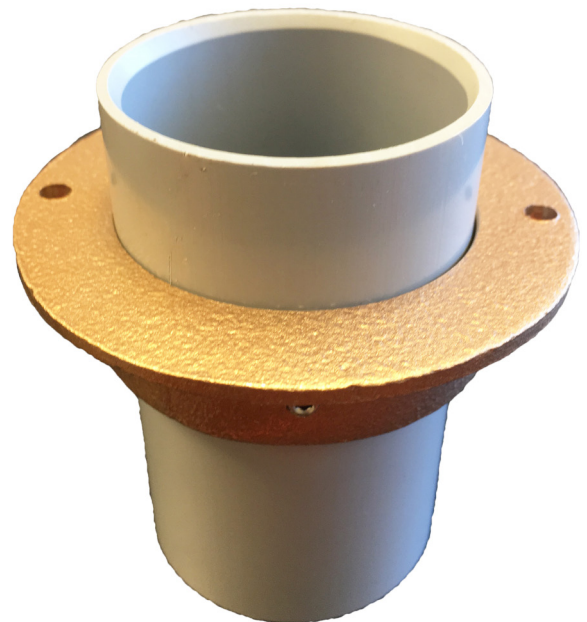
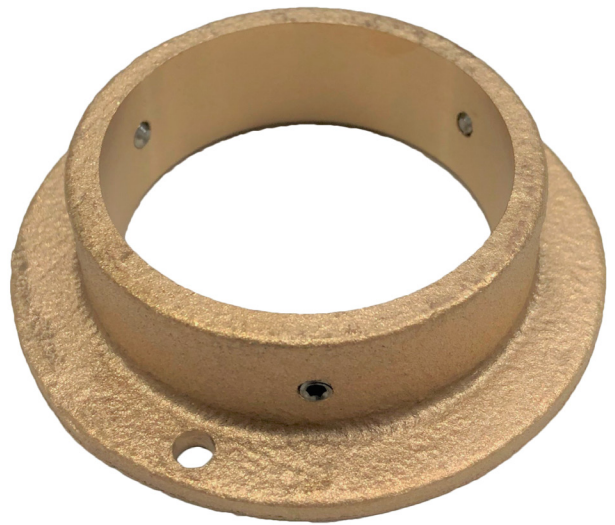


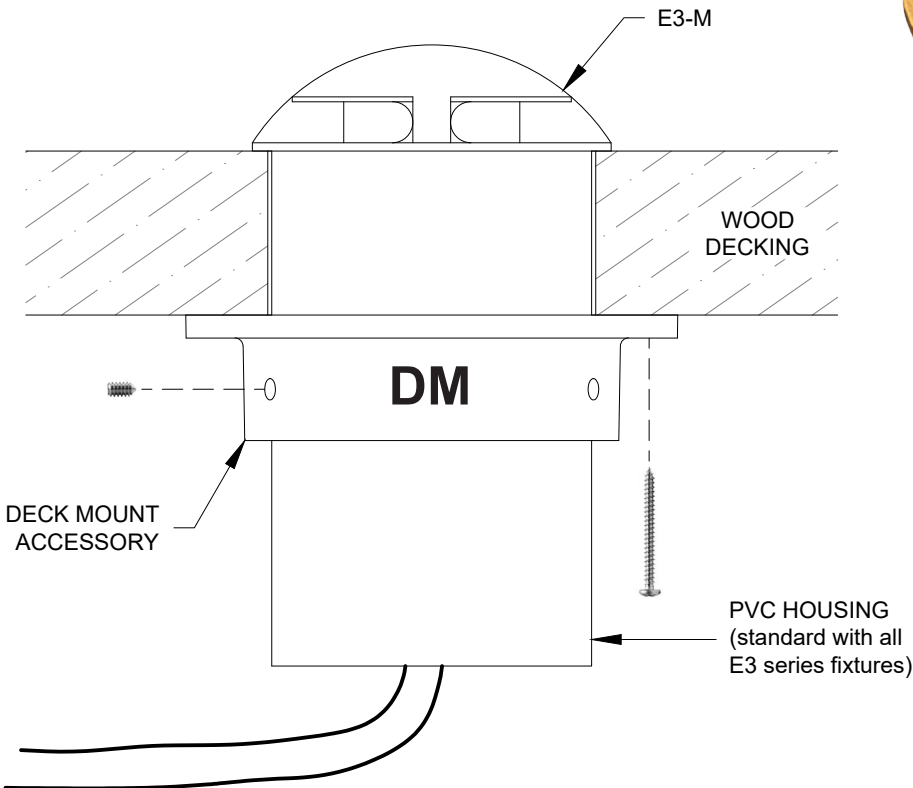
# DM

The Deck Mount (DM) accessory is a brass mounting flange used to secure the E3-series fixtures. It is used permanently in non-masonry applications where the rear of the fixture housing is exposed behind a wall or under a deck. It is also included in Beachside's Concrete Form Kit (CFK) for temporary positioning of E3 fixtures in form work before pouring and encasing the fixture in masonry.

- Includes:
- DM
  - (2) #8 x 3/4" Stainless Steel Sheet Metal Screws
  - (3) #8 x 3/16" Stainless Steel Set Screws



*DM shown attached to PVC sleeve.  
Sleeve is standard with all E3 series fixtures.*



_____	_____	_____
Project	By	Date
	<b>DM</b>	
	Accessory	