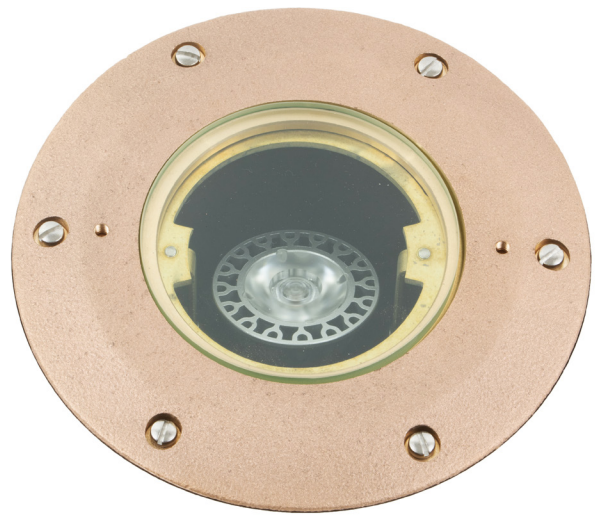


L-010-C / L-010-C-CR

The L-010-C is a brass and composite, in-ground uplight. An internal bracket assembly allows 360° rotation and angling of the lamp up to 16° before any cutoff. The integrated junction box at the base of the housing has two 3/4" NPT-tapped holes for conduit entry on the bottom and two more on opposite side walls.



- L-010-C-120V** 120V At-grade application for soil, gravel, or brick
- L-010-C-CR-120V** 120V Same as L-010-C-120V but with a **CONCRETE RING** for fully recessed concrete installation
- L-010-C-230V** 230V At-grade application for soil, gravel, or brick
- L-010-C-CR-230V** 230V Same as L-010-C-230V but with a **CONCRETE RING** for fully recessed concrete installation

Construction Cast brass cover on composite housing

Lens Clear, tempered glass.

Voltage 120V or 230V AC

Lamps GU10 MR16

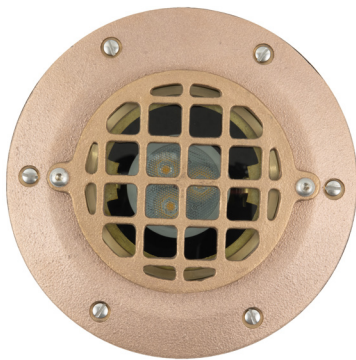
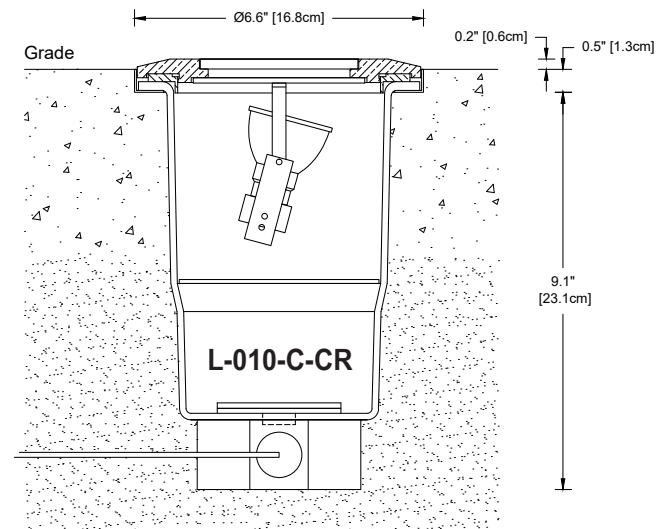
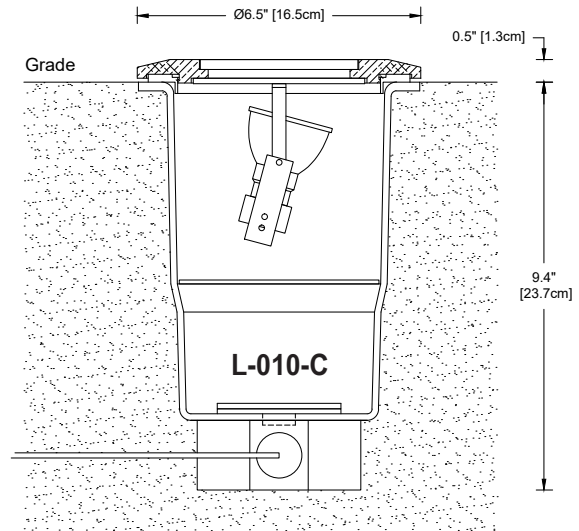
- **8W-SP** 8 Watt 10° spot
- **8W-NFL** 8 Watt 25° narrow flood
- **8W-FL** 8 Watt 36° flood

Accessories — **BGS2** Brass glare shield
— **PG** Brass protection grate

Optical Accessories — **FR-MR16** Frosted lens
— **HL-MR16** Honeycomb louver, 1/8" [3mm] thick
— **PR-MR16** Prismatic spread lens
— **RT-MR16** Rectilinear spread lens

Finish: Unfinished is standard; no specification required. The fixture will weather to a natural patina. The patina process is natural with brass and copper. Rate of patina and eventual color is dependent upon climate and proximity to the ocean. Thus, Beachside does not guarantee any specific appearance.

Weight: 5.3 lbs / 2.4 kg



Protection Grate accessory (PG)



Brass Glare Shield accessory (BGS2)

IP 67
10 year fixture warranty
3 year warranty on MR16 LED lamps
Drive-over static load rating: 12,500 lbs



SUITABLE FOR
INDOOR AND
OUTDOOR USE

Fixtures supplied with 15 ft. [4.5 m] type SJOOW cord for remote connectors.

Project	By	Date
For ordering purposes, please specify (example: L-010-C-CR-120V—8W-FL—PG—FR-MR16)		
L-010-C-	V	—
Fixture/Voltage	Lamp	Accessory