

L-012

The L-012 is a solid brass steplight with a recessed housing.

Construction Cast brass faceplate. 1/8" [3mm] thick brass recessed housing.

Lens Tempered soda lime glass

- **CL** Clear glass
- **FR** Frosted glass
- **RT** Rectilinear spread lens

Voltage 12 Volts AC. Remote transformer required.

Mounting Recessed wall mounting only, in both combustible and non-combustible surfaces. A 3" diameter x 5.1" deep [7.6 x 13cm] hole is required.

Lamps Combustible surface installation limited to 10 Watts max
GU5.3 MR16 LED • Amber (1500K), Warm White (2700K/3000K)

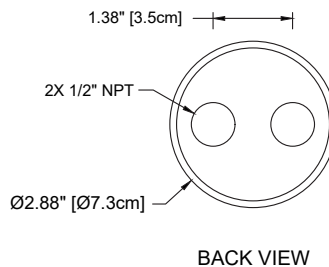
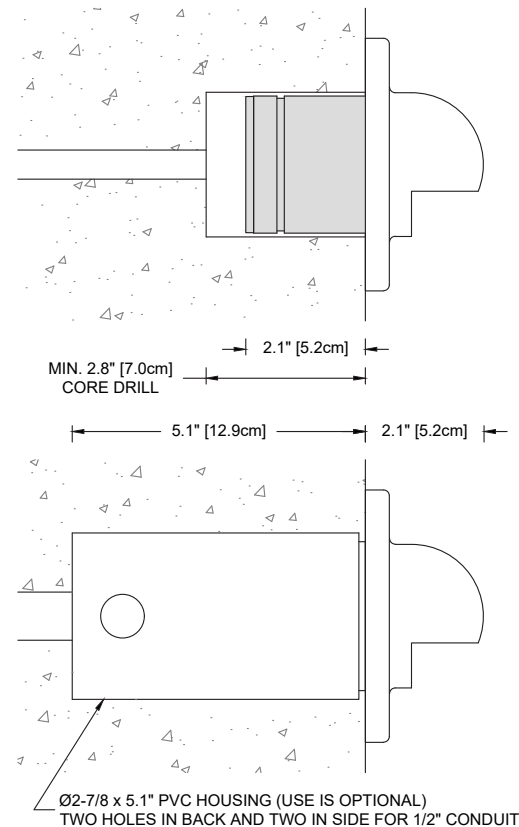
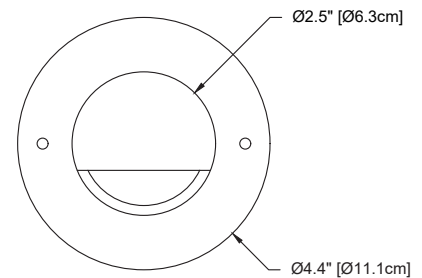
5 Watt Cree chipset <i>TURTLE FRIENDLY</i>	— 5W-A-NFL	AMBER (1500K)	25° narrow flood	20 lm
		<u>2700K</u>		
	— 5W-SP-27		15° spot	
	— 5W-NFL-27	— 5W-SP-30	25° narrow flood	
Cree chipset 5 Watts	— 5W-FL-27	— 5W-NFL-30	40° flood	52 lm
	— 5W-FL/60-27	— 5W-FL-30	60° flood	
	— 5W-WFL-27	— 5W-FL/60-30	100° wide flood	
		— 5W-WFL-30		
Lumiled chipset 7 Watts	— 7W-FL/60-27	— 7W-FL/60-30	60° flood	
Soraa chipset 8 Watts	— 8W-SP-27	— 8W-SP-30	10° spot	
	— 8W-NFL-27	— 8W-NFL-30	25° narrow flood	
	— 8W-FL-27	— 8W-FL-30	36° flood	

Finish: Unfinished is standard; no specification required. The fixture will weather to a natural patina. The patina process is natural with brass and copper. Rate of patina and eventual color is dependent upon climate and proximity to the ocean. Thus, Beachside does not guarantee any specific appearance.



Weight: 3.7 lbs / 1.7 kg

IP66
CSA Listed, file # 190030
10 year fixture warranty
3 year warranty on MR16 LED lamps



BACK VIEW

Project	By	Date
For ordering purposes, please specify (example: L-012—FR—5W-A-NFL)		
L-012		
Fixture	Lens	Lamp