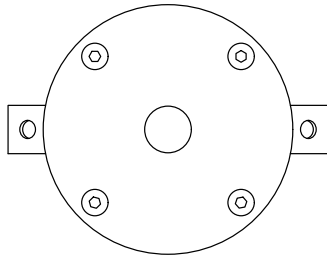


TMJBX / -2X / -3X

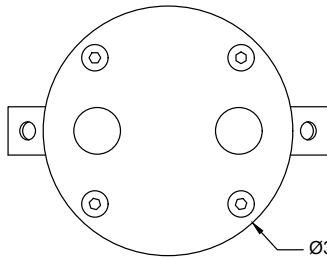
The TMJBX, TMJB2X, and TMJB3X are cast brass, tree-mounted junction boxes with two 1/2" threaded conduit entries on opposite sides and one on the back. Includes two brackets and #14 x 1.5" stainless steel sheet metal screws for mounting.

- **TMJBX** Junction box for single fixture
- **TMJB2X** Junction box for double fixture
- **TMJB3X** Junction box for 3 fixtures or 2 fixtures + Motion Sensor

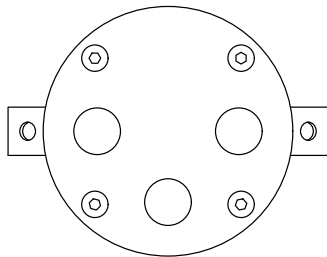
Mounting brackets are angled for mounting to a tree but can be bent to 90° for attachment to a flat surface or removed should the installer wish to drill through the back of the box for wall-mount applications.



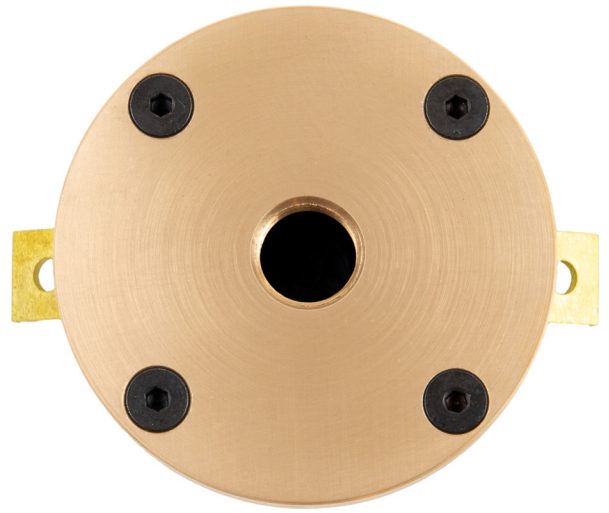
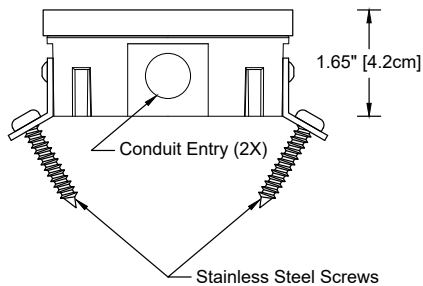
TMJBX
SINGLE MOUNT



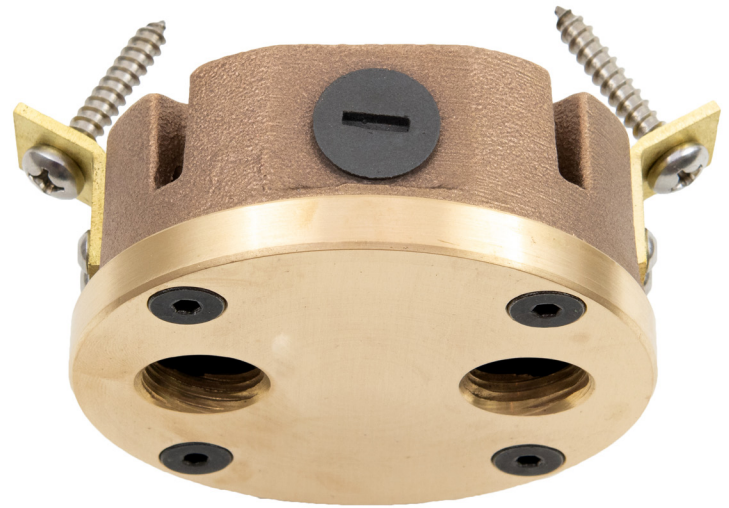
TMJB2X
DOUBLE MOUNT



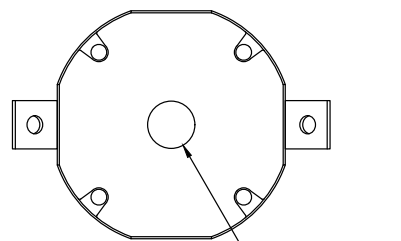
TMJB3X
TRIPLE MOUNT



Brass mounting tabs and machined flat top were incorporated into the design in 2019



TMJB2X



BOTTOM VIEW

WEIGHT: 2.4 lbs / 1.1 kg

Project _____

By _____

Date _____

For ordering purposes, please specify (TMJBX, TMJB2X, or TMJB3X)

TMJB

Accessory